



Worklist: 6865

<u>LAB_CASE</u>	<u>ITEM</u>	<u>ITEM_TYPE</u>	<u>DESCRIPTION</u>	
C2024-1093	1	BCK	AM 28 Blood Multi-Drug Quant Panel 1 by LC-QQQ	
C2024-1110	1	BCK	AM 28 Blood Multi-Drug Quant Panel 1 by LC-QQQ	
C2024-1114	2	BCK	AM 28 Blood Multi-Drug Quant Panel 1 by LC-QQQ	
C2024-1131	2	BCK	AM 28 Blood Multi-Drug Quant Panel 1 by LC-QQQ	
C2024-1141	2	BCK	AM 28 Blood Multi-Drug Quant Panel 1 by LC-QQQ	
C2024-1188	3	UCK	AM 28 Urine Multi-Drug Confirmation Panel 1 by LC-	
C2024-1189	1	BCK	AM 28 Blood Multi-Drug Quant Panel 1 by LC-QQQ	
C2024-1232	1	BCK	AM 28 Blood Multi-Drug Quant Panel 1 by LC-QQQ	
C2024-1233	1	BCK	AM 28 Blood Multi-Drug Quant Panel 1 by LC-QQQ	
C2024-1242	1	BCK	AM 28 Blood Multi-Drug Quant Panel 1 by LC-QQQ	
C2024-1244	2	BCK	AM 28 Blood Multi-Drug Quant Panel 1 by LC-QQQ	
C2024-1250	2	BCK	AM 28 Blood Multi-Drug Quant Panel 1 by LC-QQQ	

AM# 28: Multi-Drug Quantitation by LC-MS/MS

Extraction Date: 07/09/2024

Analyst: Anne Nord

Plate lot#: 240528

Plate Retest Date: 11/28/2024

Mobile phase A: 5mM Amm Form + 0.01% FA

Mobile phase B: 0.01% Formic Acid in MeOH

Blank Blood Lot: 24C52042

Blank Urine Lot: 6524

Column: Agilent 120 EC-C18 (2.1x 100-2.7um)

LCMS-QQQ ID: 69679

Pre-Analytic:

- 1. Check levels of mobile phases and needle wash refill as needed. Ensure waste is not full.
- 2. Ensure correct column is installed and begin mobile phase flow allow to equilibrate ~ 30 minutes.

Analytic:

- 1. Remove standards, plate, controls, and samples from cold storage. Allow to reach room temperature.
- 2. **Urine Hydrolysis: In blank well, add 250µL urine, 40µL BG Turbo, and 100µL Instant Buffer I. Place on plate shaker for 5 minutes.**
- 3. Using a calibrated pipette, pipette **250µL blood and urine** (if applicable) into wells of analytical (standards) plate. **Pipette ID: 390993**
- 4. Pipette **250µL 0.5 M ammonium hydroxide** in wells of analytical plate.
- 5. Place on shaking incubator at ambient temp., 900rpm for 15 minutes.
- 6. Transfer **200-450µL of blood+base and urine+base (if applicable)** mixture to corresponding wells of SLE+ plate. Amount transferred: 250
- 7. Apply positive pressure for approx. 10-15 seconds (or until no liquid remains on top of sorbent). **(Load at 85-100 PSI- Selector to the right).**
- 8. Wait 5 minutes.
- 9. Add **900uL ethyl acetate.**
- 10. Wait 5 minutes.
- 11. Apply positive pressure for approx. 15 seconds. **(10-15 PSI- Selector to the left).**
- 12. Add **900uL ethyl acetate.**
- 13. Wait 5 minutes.
- 14. Apply positive pressure for approx. 15 seconds. **(10-15 PSI- Selector to the left).**
- 15. Remove plate containing eluate. Place on SPE Dry 75401 and evaporate to dryness at approx. 35°C. **If run contains urine or at the analyst's discretion, add 50µL 1% HCl in MeOH to wells and place plate cover on plate before drying (optional).**
- 16. Reconstitute in **100µL 20% LC MeOH** and heat seal plate with foil. Place in autosampler and run worklist.

Post-Analytic

- 1. Create batch and process data.
- 2. Make necessary changes to integration limits
- 3. Integration linear and R² values ≥0.98 for each analyte.
- 4. For unknown samples and controls: response ratio within 20% of average of controls and standards, RT within +/- 5% (tramadol RT +/-2%), S/N for primary transition >10 and secondary transitions >5.
- 5. Did all QCs pass for each analyte? Yes, see comments Add Control data to QC tracking spreadsheet.
- 6. Central File Packet to include: LIMS Worklist, Method Checklist, Calibration and Control Reports.

COMMENTS: *Compounds evaluated*

Compounds evaluated

limitations

<i>Compounds evaluated</i>	<i>limitations</i>
alpha-hydroxyalprazolam	
amphetamine	5-250 calibrators 7 and 8 dropped due to accuracy
benzoylecgonine	
buprenorphine	1-100 calibrator 1 dropped due to poor response ratio is off
cocaine	
EDDP	
fentanyl	
fluorofentanyl	



fluoxetine	
hydroxyzine	
lamotrigine	5-250 calibrators 7 and 8 dropped due to accuracy
methadone	
methamphetamine	5-250 calibrators 7 and 8 dropped due to accuracy
mirtazapine	
norbuprenorphine	
norfentanyl	
sertraline	

C2024-1188-3 the wrong well plate spot was injected on 7/9/24. On 7/10/24 the correct position. The instrument was not equilibrated when the first sample was injected, so it was re-injected that injection was evaluated, A positive urine control sample was injected following that sample.

	1	2	3	4	5	6	7	8	9	10	11	12
A	IS + Cal. 1	IS + QC_1	1114-2	1244-2							1188-3	
B	IS + Cal. 2	IS + QC_2	1093-1	negative urine								
C	IS + Cal. 3	IS + QC 3	1131-2									
D	IS + Cal. 4	IS + QC_4	1250-2									
E	IS + Cal. 5	IS + QC_2	1141-2									
F	IS + Cal. 6	negative blood	1189-1									
G	IS + Cal. 7	1110-1	1233-1									
H	IS + Cal. 8	1232-1	1242-1									

blank in front

plate position 2

c2024-____-__

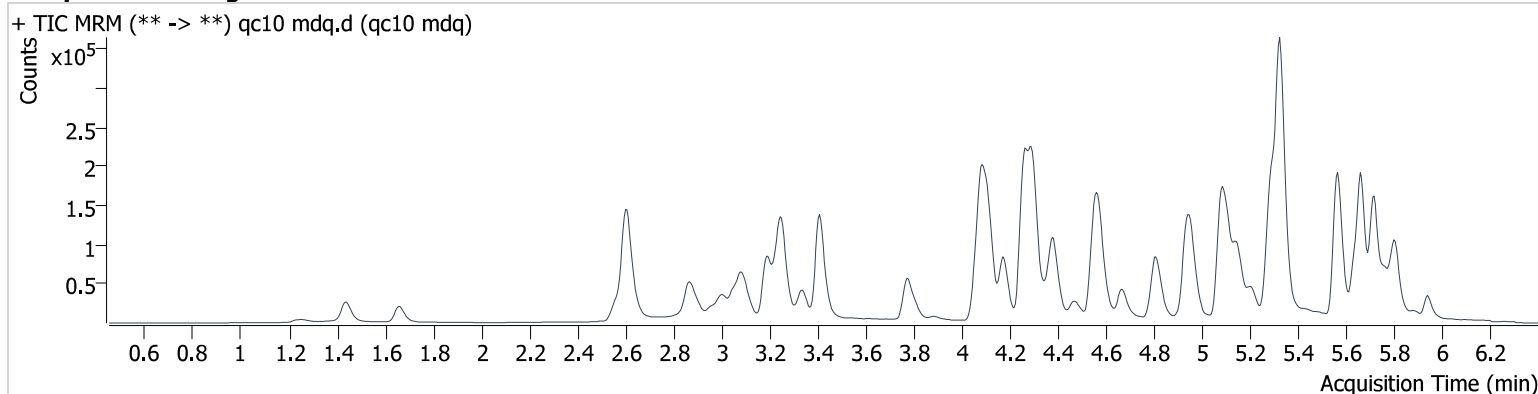
AM #28 Multi-Drug Quant. Results

Batch results D:\MassHunter\Data\2024\am 27-28\070924\QuantResults\am 28.batch.bin
Calibration Last Update 7/10/2024 2:27:24 PM

Instrument 69679
Type QC
Acq. Method mdqp1 121523.m
Sample Position P2-A2
Injection Volume 2
Acq. Date-Time 7/9/2024 3:01:56 PM
Sample Info.

Data File qc10 mdq.d
Sample qc10 mdq
Operator Anne Nord
Comment Only drugs and concentrations listed on the laboratory report itself are appropriate to be used for interpretation purposes. Any drugs or values in the notes but not included on the report are used by laboratory personnel to make determinations/reach conclusions within the confines of the methods.

Sample Chromatogram



Name	RT	Resp.	S/N	Ratio	S/N	ISTD Resp.	Final Conc.
a-hydroxyalprazolam	5.690	1375	159.9	71.80	398.9	8263	9.157 ng/ml
Amphetamine	3.089	31358	3830.7	272.33	3851.8	82243	10.329 ng/ml
Benzoylcegonine	3.905	1343	182.2	46.12	52.8	4613	9.979 ng/ml
Buprenorphine	5.818	1643	191.7	17.13	468.5	21939	1.162 ng/ml
Cocaine	4.298	42605	4309.6	44.66	1467.2	329846	9.341 ng/ml
EDDP	5.294	37279	∞	43.60	1215.2	161128	8.858 ng/ml
Fentanyl	5.121	4515	423.6	124.84	323.4	207280	0.884 ng/ml
Fluorofentanyl	5.183	4175	747.1	112.13	139.4	2353	0.964 ng/ml
Fluoxetine	5.717	47248	8736.7	6.47	10525.9	132535	11.252 ng/ml
Hydroxyzine	5.720	45022	749.7	103.30	3747.0	609786	8.605 ng/ml
Lamotrigine	4.357	27237	3684.7	101.43	3116.4	59650	97.523 ng/ml
Methadone	5.664	56652	1387.4	67.27	3017.1	253211	9.828 ng/ml
Methamphetamine	3.252	96507	13525.9	37.17	3422.5	198365	10.183 ng/ml
Mirtazapine	4.669	64172	4538.0	52.26	2927.6	84598	8.962 ng/ml
Norbuprenorphine	5.032	503	560.3	100.23	941.4	6348	0.900 ng/ml
Norfentanyl	4.113	2768	245.6	28.75	∞	317150	0.940 ng/ml
Sertraline	5.790	12430	1232.7	88.84	2506.7	41884	11.686 ng/ml

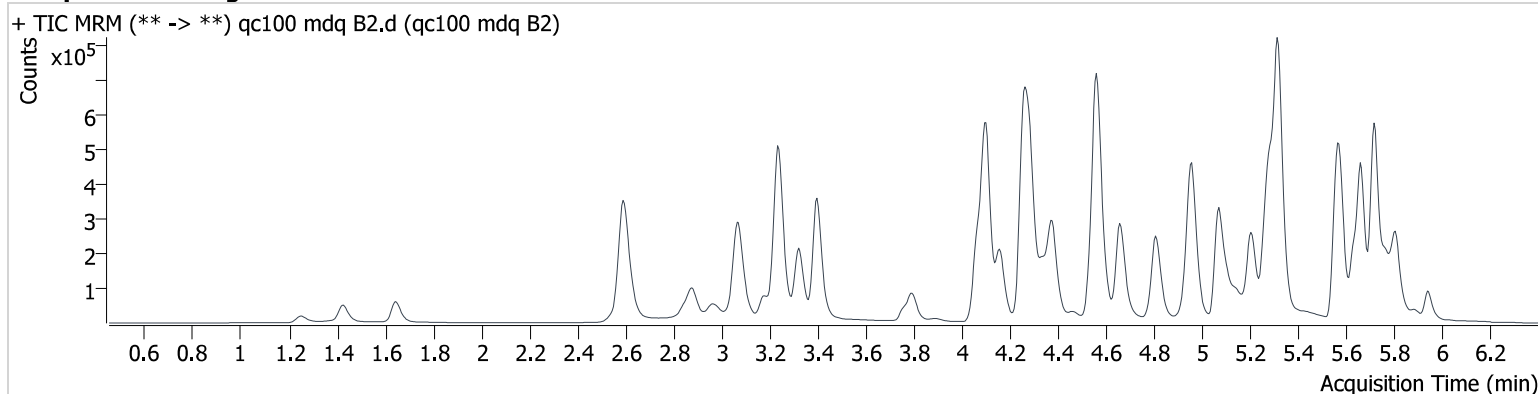
AM #28 Multi-Drug Quant. Results

Batch results D:\MassHunter\Data\2024\am 27-28\070924\QuantResults\am 28.batch.bin
Calibration Last Update 7/10/2024 2:27:24 PM

Instrument 69679
Type Sample
Acq. Method mdqp1 121523.m
Sample Position P2-B2
Injection Volume 2
Acq. Date-Time 7/9/2024 6:39:01 PM
Sample Info.

Data File qc100 mdq B2.d
Sample qc100 mdq B2
Operator Anne Nord
Comment Only drugs and concentrations listed on the laboratory report itself are appropriate to be used for interpretation purposes. Any drugs or values in the notes but not included on the report are used by laboratory personnel to make determinations/reach conclusions within the confines of the methods.

Sample Chromatogram



Name	RT	Resp.	S/N	Ratio	S/N	ISTD Resp.	Final Conc.
a-hydroxyalprazolam	5.690	12291	313.8	57.86	179.7	6350	90.040 ng/ml
Amphetamine	3.074	181407	31228.1	273.07	7761.1	55012	98.633 ng/ml
Benzoylcegonine	3.895	10897	2325.7	43.92	453.1	3531	102.725 ng/ml
Buprenorphine	5.833	12197	80806.4	14.58	1802.0	15424	10.895 ng/ml
Cocaine	4.288	339920	28840.3	44.01	10504.0	242864	101.919 ng/ml
EDDP	5.284	289003	5056.4	41.73	4792.0	122141	99.347 ng/ml
Fentanyl	5.116	33618	4697.4	135.88	9072.1	157012	8.758 ng/ml
Fluorofentanyl	5.178	33370	172.8	116.08	343.3	1814	9.895 ng/ml
Fluoxetine	5.717	290094	31929.5	6.62	40054.2	91472	102.095 ng/ml
Hydroxyzine	5.720	331211	17370.9	110.18	40156.7	433316	104.797 ng/ml
Lamotrigine	4.341	146464	12720.5	99.06	6613890.7	39136	967.828 ng/ml
Methadone	5.664	403259	66385.9	68.56	13990.9	184354	92.644 ng/ml
Methamphetamine	3.242	529415	36507.3	37.46	16194.4	142628	99.116 ng/ml
Mirtazapine	4.659	487222	280077.9	52.73	3444.2	61772	94.153 ng/ml
Norbuprenorphine	5.027	3083	6832.8	94.31	11749.4	4559	10.547 ng/ml
Norfentanyl	4.103	19035	3803.1	28.82	5889.5	208800	10.080 ng/ml
Sertraline	5.790	66584	17480.8	90.92	4570.3	25692	102.190 ng/ml

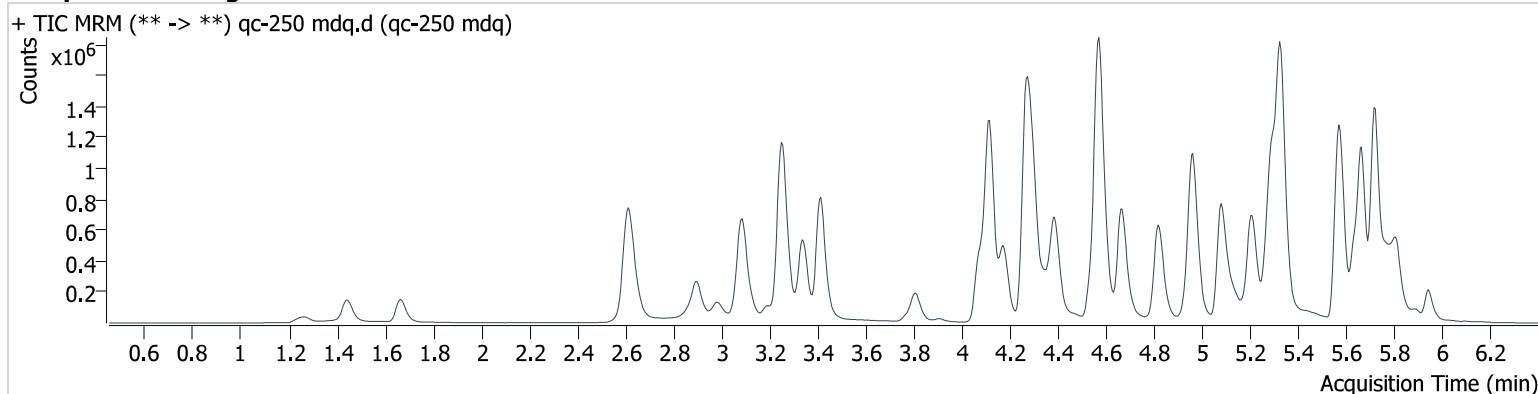
AM #28 Multi-Drug Quant. Results

Batch results D:\MassHunter\Data\2024\am 27-28\070924\QuantResults\am 28.batch.bin
Calibration Last Update 7/10/2024 2:27:24 PM

Instrument 69679
Type QC
Acq. Method mdqp1 121523.m
Sample Position P2-C2
Injection Volume 2
Acq. Date-Time 7/9/2024 3:10:37 PM
Sample Info.

Data File qc-250 mdq.d
Sample qc-250 mdq
Operator Anne Nord
Comment Only drugs and concentrations listed on the laboratory report itself are appropriate to be used for interpretation purposes. Any drugs or values in the notes but not included on the report are used by laboratory personnel to make determinations/reach conclusions within the confines of the methods.

Sample Chromatogram



Name	RT	Resp.	S/N	Ratio	S/N	ISTD Resp.	Final Conc.
a-hydroxyalprazolam	5.695	29688	3587.4	61.94	3416.5	6337	215.725 ng/ml
Amphetamine	3.089	450778	2970.8	263.73	4635.2	64765	209.535 ng/ml
Benzoylcegonine	3.905	30863	1724.8	41.64	313.5	4402	232.982 ng/ml
Buprenorphine	5.818	31859	4085.5	14.48	14705.3	16590	26.254 ng/ml
Cocaine	4.298	867108	180268.8	43.85	256462.2	254988	247.728 ng/ml
EDDP	5.294	865475	63720.9	43.84	∞	148882	245.460 ng/ml
Fentanyl	5.127	102026	2789.1	133.91	23426.0	183740	22.724 ng/ml
Fluorofentanyl	5.183	96833	2449.9	114.86	1326.6	2040	25.511 ng/ml
Fluoxetine	5.717	852302	78189.6	6.65	138596.8	106287	258.533 ng/ml
Hydroxyzine	5.720	850159	35207.8	112.78	41220.3	466502	252.184 ng/ml
Lamotrigine	4.357	275317	102283.2	97.89	21300.4	34404	2096.141 ng/ml
Methadone	5.664	1202777	53359.0	66.37	30660.9	211620	240.094 ng/ml
Methamphetamine	3.252	1436299	40193.5	35.86	11862.6	170042	229.671 ng/ml
Mirtazapine	4.664	1315350	186788.6	51.98	66647.2	64340	244.204 ng/ml
Norbuprenorphine	5.037	8627	17028.0	101.73	18474.4	5366	25.607 ng/ml
Norfentanyl	4.113	45609	1754.1	30.03	5531.5	204782	24.666 ng/ml
Sertraline	5.790	198073	21455.1	95.87	76869.0	32250	242.200 ng/ml

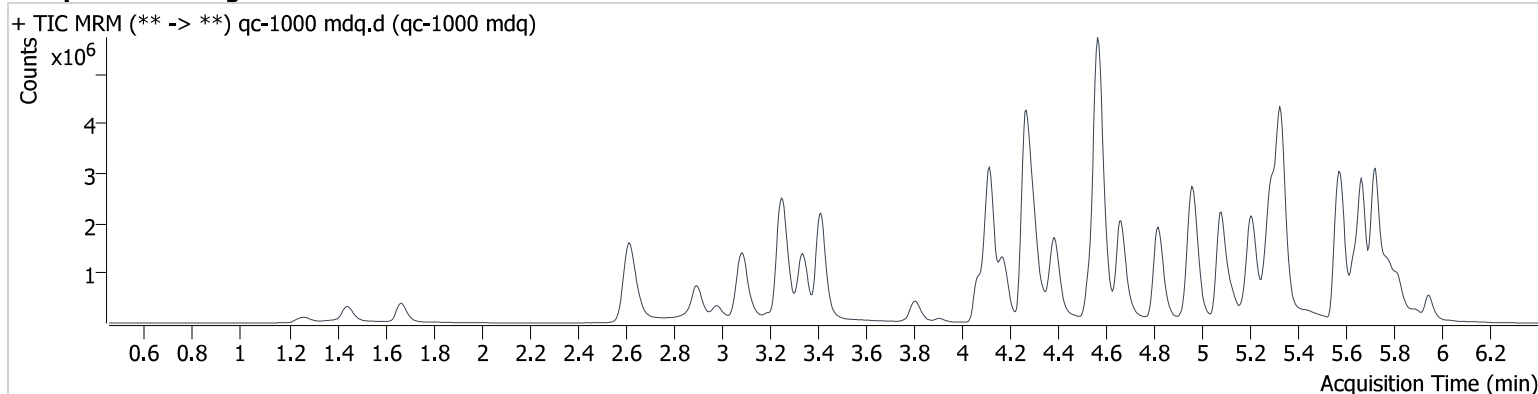
AM #28 Multi-Drug Quant. Results

Batch results D:\MassHunter\Data\2024\am 27-28\070924\QuantResults\am 28.batch.bin
Calibration Last Update 7/10/2024 2:27:24 PM

Instrument 69679
Type QC
Acq. Method mdqp1 121523.m
Sample Position P2-D2
Injection Volume 2
Acq. Date-Time 7/9/2024 3:19:19 PM
Sample Info.

Data File qc-1000 mdq.d
Sample qc-1000 mdq
Operator Anne Nord
Comment Only drugs and concentrations listed on the laboratory report itself are appropriate to be used for interpretation purposes. Any drugs or values in the notes but not included on the report are used by laboratory personnel to make determinations/reach conclusions within the confines of the methods.

Sample Chromatogram



Name	RT	Resp.	S/N	Ratio	S/N	ISTD Resp.	Final Conc.
a-hydroxyalprazolam	5.695	87282	3769.9	58.28	1319.9	3870	1032.658 ng/ml
Amphetamine	3.094	971498	138987.7	252.07	76261.0	52192	562.410 ng/ml
Benzoylcegonine	3.905	123694	17869.2	42.91	9387.5	4522	907.888 ng/ml
Buprenorphine	5.823	79770	46054.1	16.95	20463.3	10729	101.225 ng/ml
Cocaine	4.298	2461483	673378.5	41.93	275933.8	181512	988.109 ng/ml
EDDP	5.294	2895072	∞	42.12	50292.7	122664	999.477 ng/ml
Fentanyl	5.121	381355	19086.8	135.47	18862.7	156015	100.057 ng/ml
Fluorofentanyl	5.178	345140	330785.1	111.21	18126.3	1877	98.818 ng/ml
Fluoxetine	5.722	1906129	79927.6	6.65	684416.8	61549	999.191 ng/ml
Hydroxyzine	5.720	2110704	107269.3	111.90	∞	304548	963.764 ng/ml
Lamotrigine	4.352	435795	241369.9	94.41	76968.9	18034	6377.146 ng/ml
Methadone	5.664	3816884	1686847.4	62.35	∞	158544	1015.709 ng/ml
Methamphetamine	3.252	3715107	924048.0	39.46	∞	166592	611.664 ng/ml
Mirtazapine	4.664	3719084	270936.9	52.43	273146.7	42889	1036.146 ng/ml
Norbuprenorphine	5.037	29966	71865.0	99.49	∞	5042	95.687 ng/ml
Norfentanyl	4.113	86814	5388.2	29.42	13003.5	91064	105.671 ng/ml
Sertraline	5.785	419375	126822.7	92.21	120334.0	16842	981.996 ng/ml

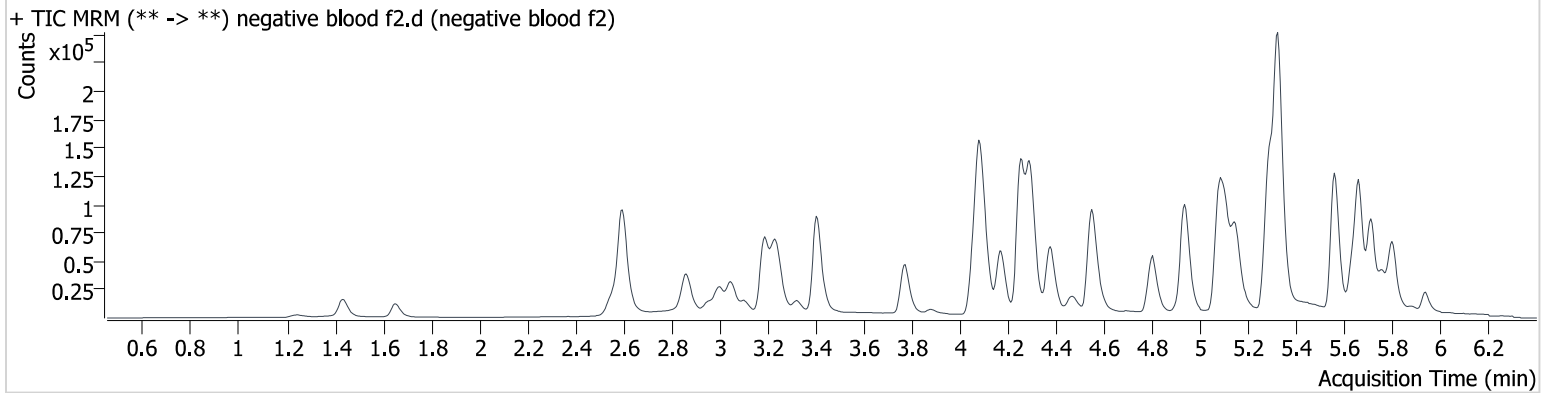
AM #28 Multi-Drug Quant. Results

Batch results D:\MassHunter\Data\2024\am 27-28\070924\QuantResults\am 28.batch.bin
Calibration Last Update 7/10/2024 2:27:24 PM

Instrument 69679
Type Sample
Acq. Method mdqp1 121523.m
Sample Position P2-F2
Injection Volume 2
Acq. Date-Time 7/9/2024 3:36:40 PM
Sample Info.

Data File negative blood f2.d
Sample negative blood f2
Operator Anne Nord
Comment Only drugs and concentrations listed on the laboratory report itself are appropriate to be used for interpretation purposes. Any drugs or values in the notes but not included on the report are used by laboratory personnel to make determinations/reach conclusions within the confines of the methods.

Sample Chromatogram



AM #28 Multi-Drug Quant. Results

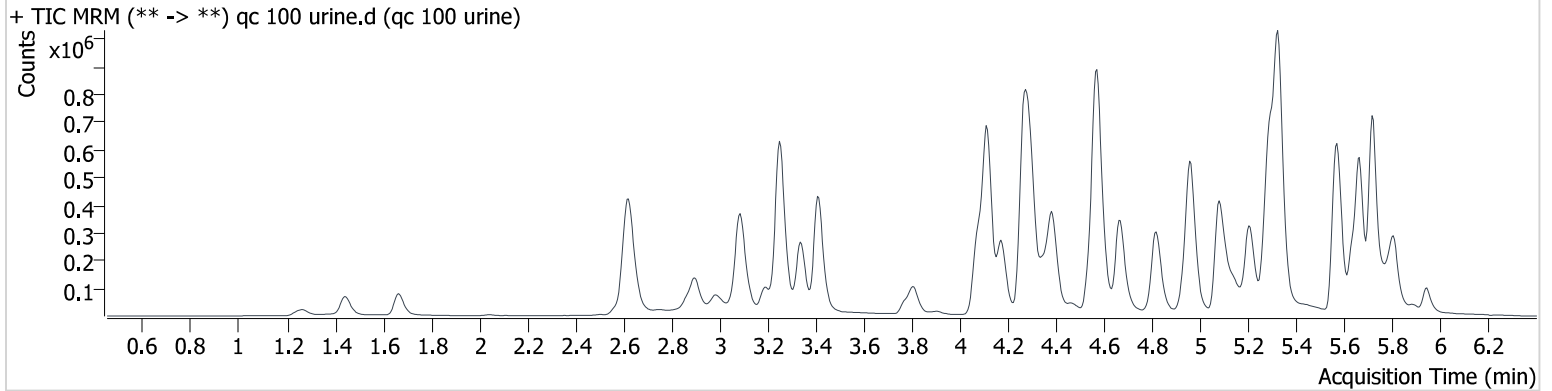
Batch results D:\MassHunter\Data\2024\am 27-28\070924\QuantResults\am 28.batch.bin
Calibration Last Update 7/10/2024 2:27:24 PM

Instrument 69679
Type Sample
Acq. Method mdqp1 121523.m
Sample Position P2-E2
Injection Volume 2
Acq. Date-Time 7/9/2024 3:28:00 PM
Sample Info.

Data File qc 100 urine.d
Sample qc 100 urine
Operator Anne Nord
Comment

Only drugs and concentrations listed on the laboratory report itself are appropriate to be used for interpretation purposes. Any drugs or values in the notes but not included on the report are used by laboratory personnel to make determinations/reach conclusions within the confines of the methods.

Sample Chromatogram



Name	RT	Resp.	S/N	Ratio	S/N	ISTD Resp.	Final Conc.
a-hydroxyalprazolam	5.695	13977	2285.8	61.87	826.6	6951	93.472 ng/ml
Amphetamine	3.089	236780	2746.9	255.33	7877.6	71480	99.086 ng/ml
Benzoylcegonine	3.905	15753	2142.7	41.72	525.1	5395	97.203 ng/ml
Buprenorphine	5.818	8446	7718.5	18.07	17928.3	13715	8.516 ng/ml
Cocaine	4.298	397259	6033.5	43.44	4662.5	293244	98.645 ng/ml
EDDP	5.294	503082	75273.0	40.94	6618.1	205453	102.845 ng/ml
Fentanyl	5.127	44938	4325.4	131.37	4684.1	197036	9.329 ng/ml
Fluorofentanyl	5.183	42818	991.4	120.48	1226.0	2228	10.339 ng/ml
Fluoxetine	5.717	446892	13900.3	6.34	∞	130572	110.200 ng/ml
Hydroxyzine	5.720	377998	9312.9	108.29	15883.5	539719	95.881 ng/ml
Lamotrigine	4.357	171877	32120.7	94.43	16629.7	40884	1090.066 ng/ml
Methadone	5.665	511565	6826.3	66.30	76797.2	226774	95.529 ng/ml
Methamphetamine	3.252	663117	∞	38.50	57777.8	182295	97.069 ng/ml
Mirtazapine	4.669	600876	594735.5	52.38	14809.8	74025	96.898 ng/ml
Norbuprenorphine	5.043	4358	9470.9	99.64	1195.1	6360	10.694 ng/ml
Norfentanyl	4.113	22615	∞	29.22	1649.5	259832	9.623 ng/ml
Sertraline	5.790	89983	6768.3	96.61	14240.8	34210	103.716 ng/ml

AM #28 Multi-Drug Quant. Results

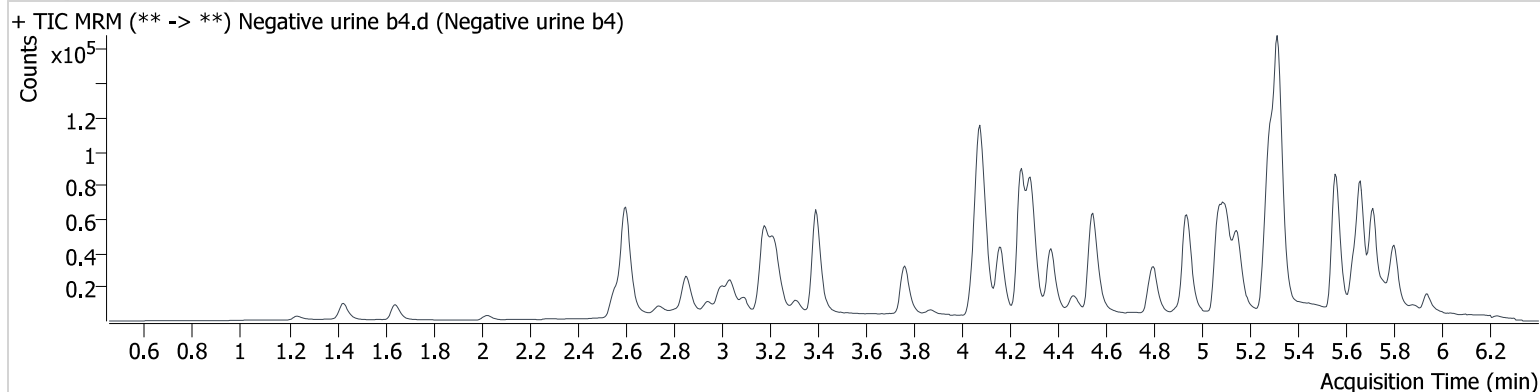
Batch results D:\MassHunter\Data\2024\am 27-28\070924\QuantResults\am 28.batch.bin
Calibration Last Update 7/10/2024 2:27:24 PM

Instrument 69679
Type Sample
Acq. Method mdqp1 121523.m
Sample Position P2-B4
Injection Volume 2
Acq. Date-Time 7/9/2024 5:55:34 PM
Sample Info.

Data File Negative urine b4.d
Sample Negative urine b4
Operator Anne Nord

Comment Only drugs and concentrations listed on the laboratory report itself are appropriate to be used for interpretation purposes. Any drugs or values in the notes but not included on the report are used by laboratory personnel to make determinations/reach conclusions within the confines of the methods.

Sample Chromatogram



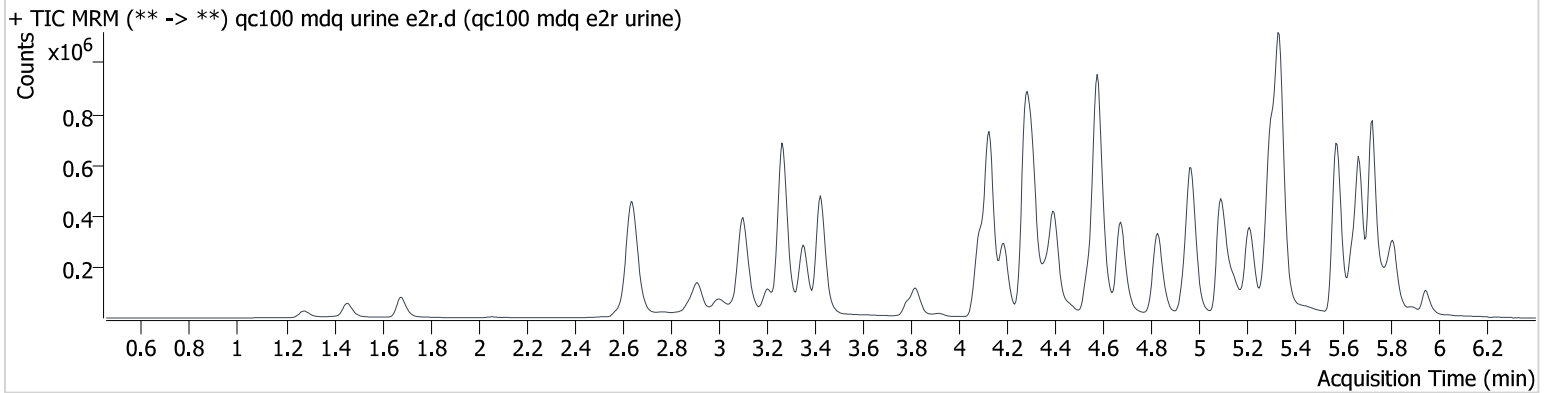
AM #28 Multi-Drug Quant. Results

Batch results D:\MassHunter\Data\2024\am 27-28\070924\QuantResults\am 28.batch.bin
Calibration Last Update 7/10/2024 2:27:24 PM

Instrument 69679
Type Sample
Acq. Method mdqp1 121523.m
Sample Position P2-E2
Injection Volume 2
Acq. Date-Time 7/10/2024 12:04:53 PM
Sample Info.

Data File qc100 mdq urine e2r.d
Sample qc100 mdq e2r urine
Operator Anne Nord
Comment Only drugs and concentrations listed on the laboratory report itself are appropriate to be used for interpretation purposes. Any drugs or values in the notes but not included on the report are used by laboratory personnel to make determinations/reach conclusions within the confines of the methods.

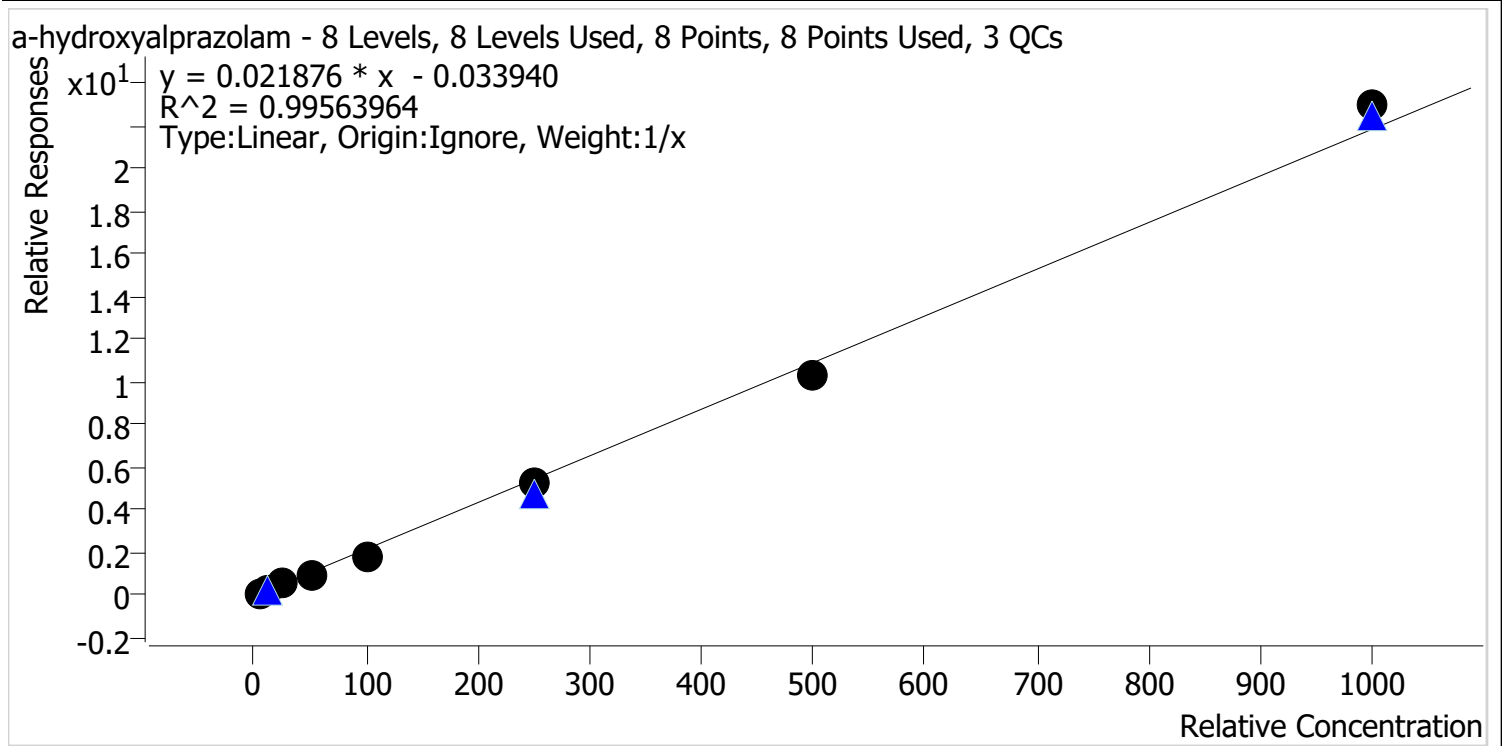
Sample Chromatogram



Name	RT	Resp.	S/N	Ratio	S/N	ISTD Resp.	Final Conc.
a-hydroxyalprazolam	5.695	14468	681.3	61.32	2220.9	7222	93.133 ng/ml
Amphetamine	3.105	257490	20602.9	252.74	21135.2	79383	97.000 ng/ml
Benzoylcegonine	3.921	16396	2220.3	42.72	1196.6	5797	94.169 ng/ml
Buprenorphine	5.813	9191	5899.1	15.24	6350.1	12691	9.990 ng/ml
Cocaine	4.308	433604	63730.2	42.31	15478.4	315975	99.926 ng/ml
EDDP	5.305	535338	4444.0	41.44	7559.3	218844	102.741 ng/ml
Fentanyl	5.132	46665	1122.2	131.26	8112.8	207052	9.219 ng/ml
Fluorofentanyl	5.188	45882	40398.7	114.15	377.8	2146	11.498 ng/ml
Fluoxetine	5.722	458803	1013962.3	6.71	12259.0	142829	103.413 ng/ml
Hydroxyzine	5.720	397021	41786.8	111.58	∞	578081	93.991 ng/ml
Lamotrigine	4.372	179291	59187.5	97.31	67757.3	46649	994.558 ng/ml
Methadone	5.670	554631	9607.0	66.94	14745.1	254345	92.357 ng/ml
Methamphetamine	3.268	722877	∞	37.46	81998.2	210124	91.626 ng/ml
Mirtazapine	4.674	626759	119112.1	52.69	54041.9	84178	88.873 ng/ml
Norbuprenorphine	5.048	4525	2326.4	93.40	6864.8	6752	10.451 ng/ml
Norfentanyl	4.123	24600	12659.1	29.42	1334.5	267011	10.187 ng/ml
Sertraline	5.790	92097	3269.4	93.75	4980.2	36168	100.403 ng/ml

Compound Calibration Report

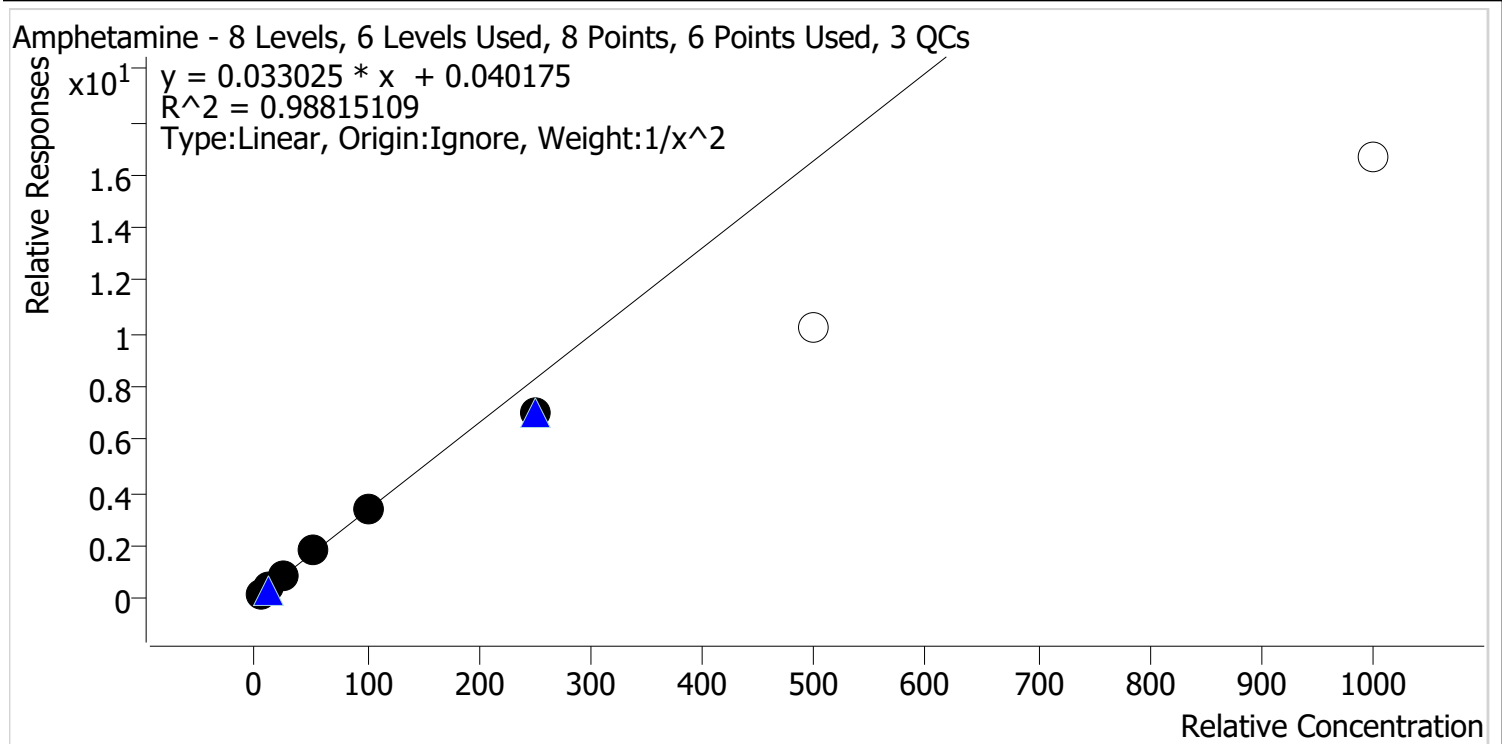
Batch results	D:\MassHunter\Data\2024\am 27-28\070924\QuantResults\am 28.batch.bin		
Last Cal. Update	7/10/2024 2:27 PM		
Analyst Name	ISP\datastor		
Analyte	a-hydroxyalprazolam	Internal Standard	a-hydroxyalprazolam-D5



Sample	Level	Enabled	Expected Concentration	Final Concentration	Accuracy
cal 1 mdq	1	✓	5.0	5.3	106.0
cal 2 mdq	2	✓	10.0	10.9	109.5
cal 3 mdq	3	✓	25.0	27.6	110.5
cal 4 mdq	4	✓	50.0	46.9	93.8
cal 5 mdq	5	✓	100.0	83.6	83.6
cal 6 mdq	6	✓	250.0	243.0	97.2
cal 7 mdq	7	✓	500.0	471.3	94.3
cal 8 mdq	8	✓	1000.0	1051.3	105.1

Compound Calibration Report

Batch results D:\MassHunter\Data\2024\am 27-28\070924\QuantResults\am 28.batch.bin
Last Cal. Update 7/10/2024 2:27 PM
Analyst Name ISP\datastor
Analyte Amphetamine **Internal Standard** Amphetamine-D11

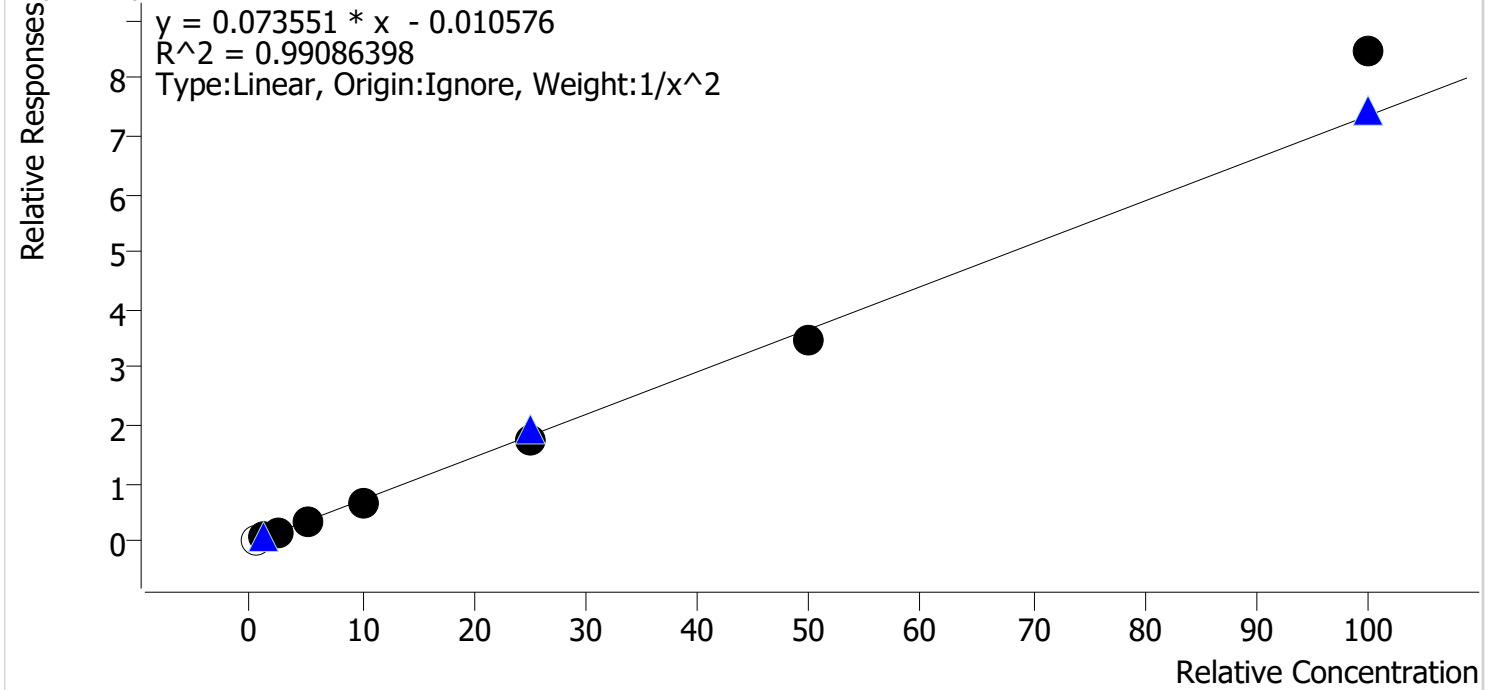


Sample	Level	Enabled	Expected Concentration	Final Concentration	Accuracy
cal 1 mdq	1	✓	5.0	4.8	95.3
cal 2 mdq	2	✓	10.0	10.6	105.6
cal 3 mdq	3	✓	25.0	27.0	107.9
cal 4 mdq	4	✓	50.0	53.4	106.7
cal 5 mdq	5	✓	100.0	99.9	99.9
cal 6 mdq	6	✓	250.0	211.6	84.6
cal 7 mdq	7	✗	500.0	310.3	62.1
cal 8 mdq	8	✗	1000.0	504.7	50.5

Compound Calibration Report

Batch results D:\MassHunter\Data\2024\lam 27-28\070924\QuantResults\lam 28.batch.bin
Last Cal. Update 7/10/2024 2:27 PM
Analyst Name ISP\datastor
Analyte Buprenorphine **Internal Standard** Buprenorphine-D4

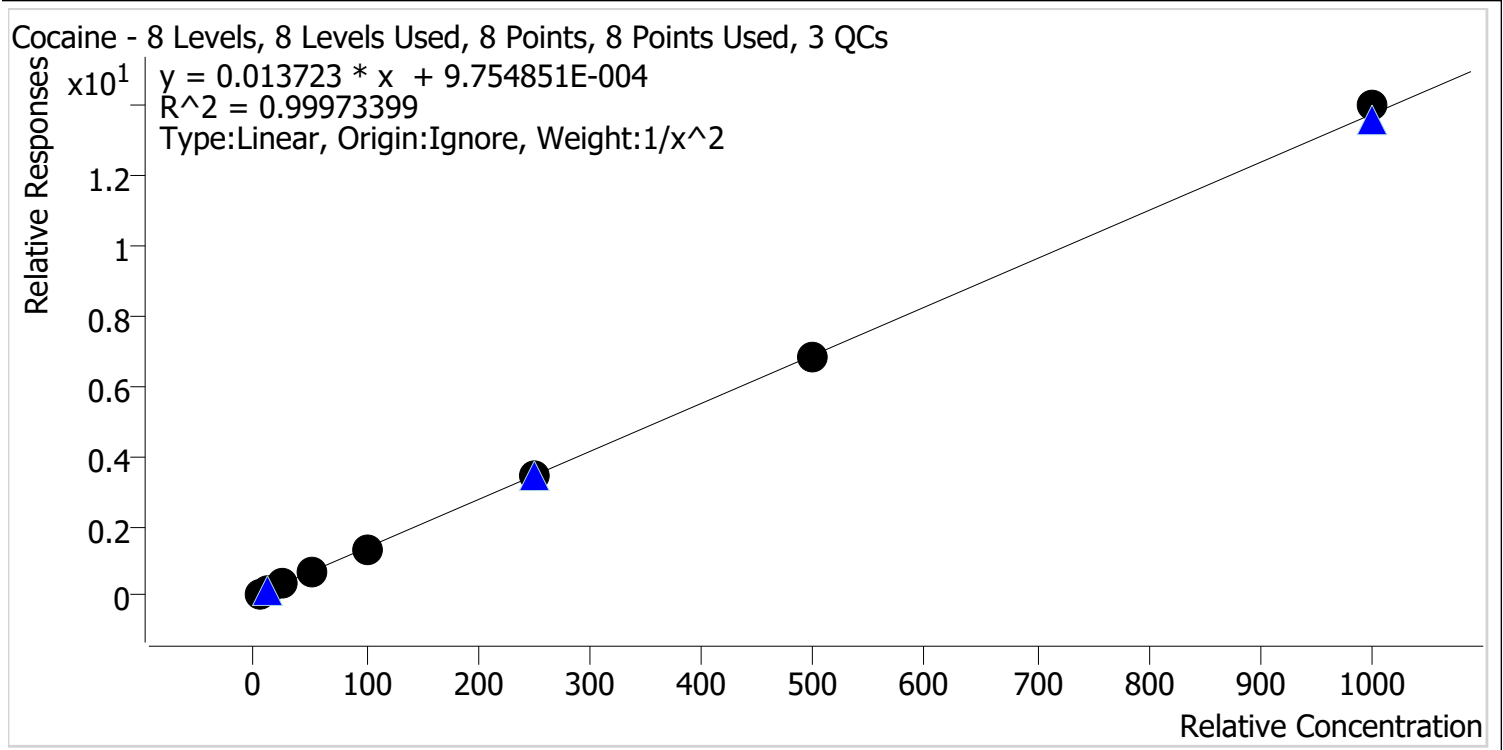
Buprenorphine - 8 Levels, 7 Levels Used, 8 Points, 7 Points Used, 3 QCs



Sample	Level	Enabled	Expected Concentration	Final Concentration	Accuracy
cal 1 mdq	1	x	0.5	0.7	133.1
cal 2 mdq	2	✓	1.0	1.0	103.3
cal 3 mdq	3	✓	2.5	2.3	91.1
cal 4 mdq	4	✓	5.0	5.2	104.5
cal 5 mdq	5	✓	10.0	9.4	93.9
cal 6 mdq	6	✓	25.0	24.3	97.2
cal 7 mdq	7	✓	50.0	47.5	95.0
cal 8 mdq	8	✓	100.0	115.0	115.0

Compound Calibration Report

Batch results D:\MassHunter\Data\2024\am 27-28\070924\QuantResults\am 28.batch.bin
Last Cal. Update 7/10/2024 2:27 PM
Analyst Name ISP\datastor
Analyte Cocaine **Internal Standard** Cocaine-d3

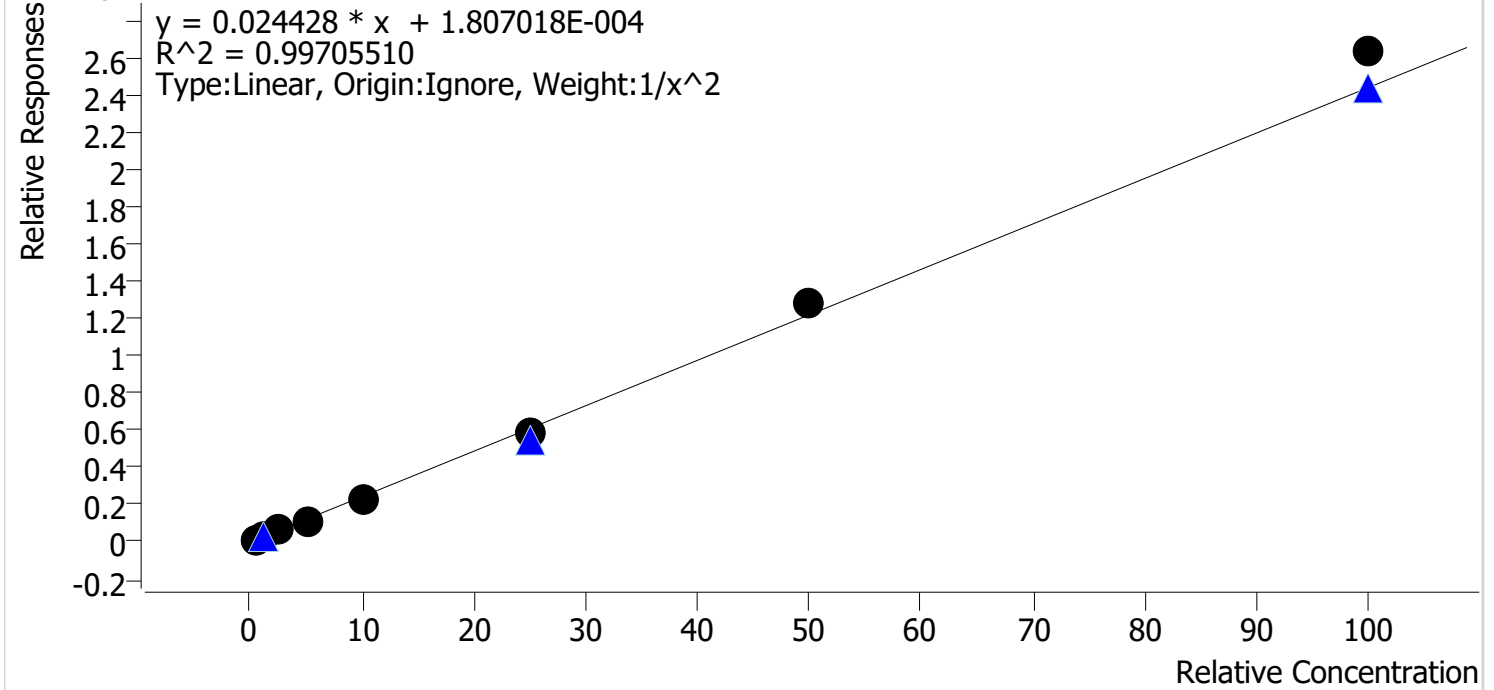


Sample	Level	Enabled	Expected Concentration	Final Concentration	Accuracy
cal 1 mdq	1	✓	5.0	4.9	99.0
cal 2 mdq	2	✓	10.0	10.3	102.5
cal 3 mdq	3	✓	25.0	24.9	99.7
cal 4 mdq	4	✓	50.0	49.5	98.9
cal 5 mdq	5	✓	100.0	98.5	98.5
cal 6 mdq	6	✓	250.0	250.2	100.1
cal 7 mdq	7	✓	500.0	497.7	99.5
cal 8 mdq	8	✓	1000.0	1017.7	101.8

Compound Calibration Report

Batch results D:\MassHunter\Data\2024\am 27-28\070924\QuantResults\am 28.batch.bin
Last Cal. Update 7/10/2024 2:27 PM
Analyst Name ISP\datastor
Analyte Fentanyl **Internal Standard** Fentanyl-D5

Fentanyl - 8 Levels, 8 Levels Used, 8 Points, 8 Points Used, 3 QCs



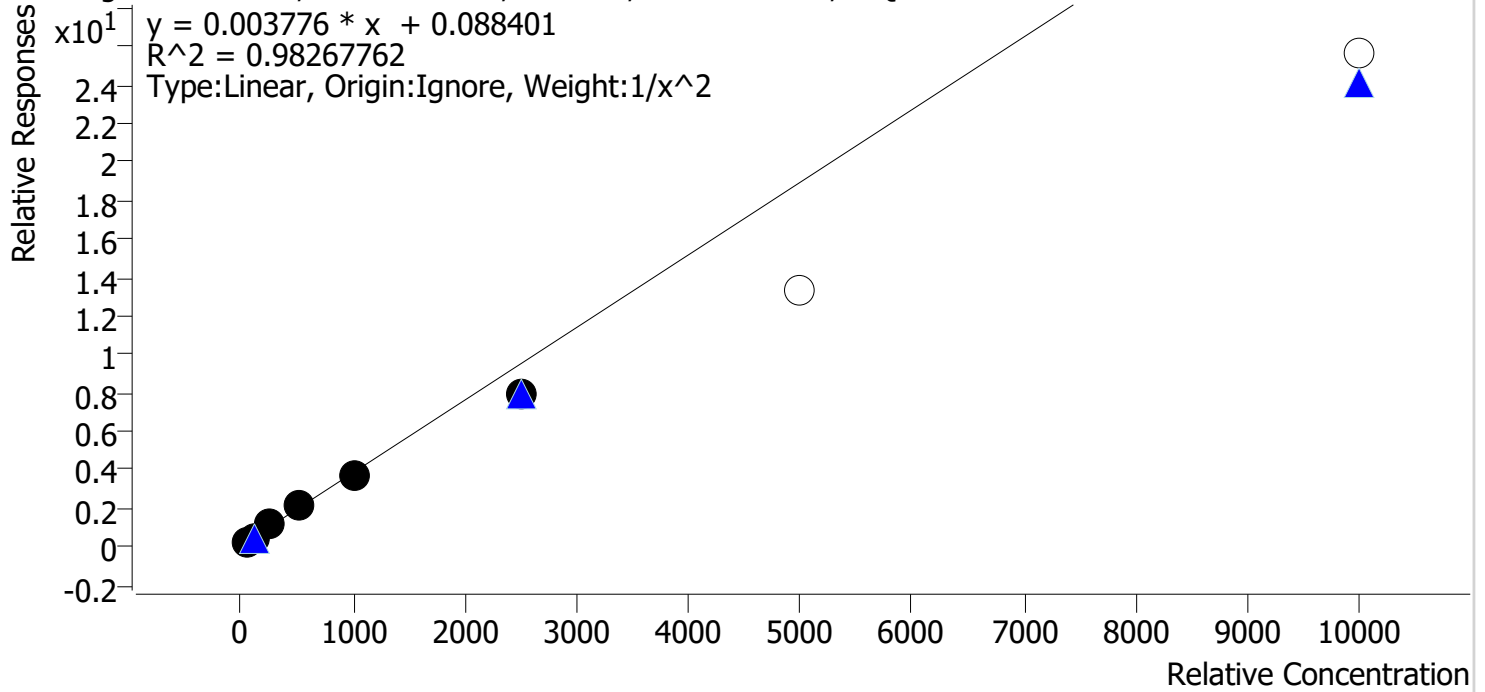
Sample	Level	Enabled	Expected Concentration	Final Concentration	Accuracy
cal 1 mdq	1	✓	0.5	0.5	102.2
cal 2 mdq	2	✓	1.0	1.0	98.1
cal 3 mdq	3	✓	2.5	2.4	96.7
cal 4 mdq	4	✓	5.0	4.8	96.2
cal 5 mdq	5	✓	10.0	9.5	95.5
cal 6 mdq	6	✓	25.0	24.4	97.6
cal 7 mdq	7	✓	50.0	52.9	105.8
cal 8 mdq	8	✓	100.0	107.9	107.9

Compound Calibration Report

Batch results D:\MassHunter\Data\2024\lam 27-28\070924\QuantResults\lam 28.batch.bin
Last Cal. Update 7/10/2024 2:27 PM
Analyst Name ISP\datastor
Analyte Lamotrigine

Internal Standard Carisoprodol-D7

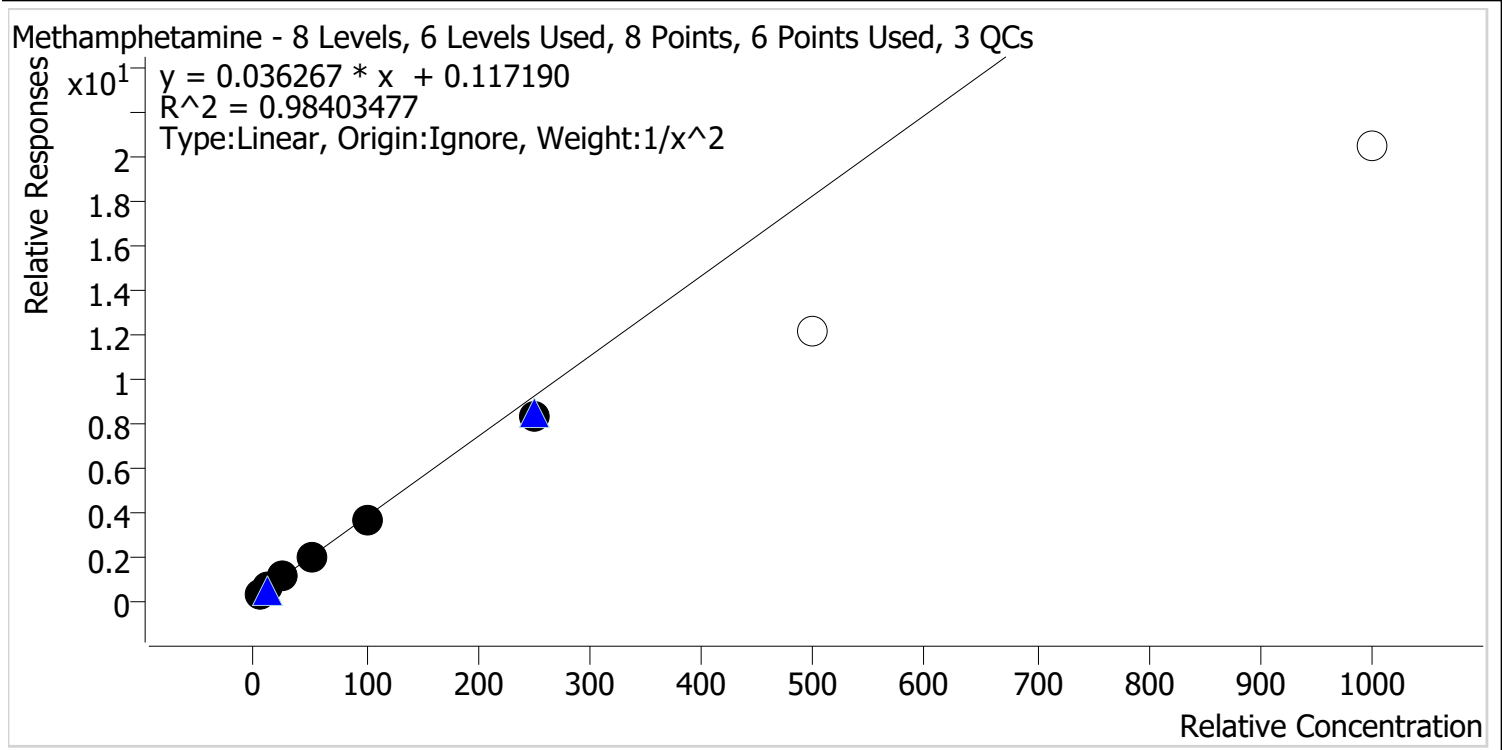
Lamotrigine - 8 Levels, 6 Levels Used, 8 Points, 6 Points Used, 3 QCs



Sample	Level	Enabled	Expected Concentration	Final Concentration	Accuracy
cal 1 mdq	1	✓	50.0	48.2	96.4
cal 2 mdq	2	✓	100.0	101.0	101.0
cal 3 mdq	3	✓	250.0	283.0	113.2
cal 4 mdq	4	✓	500.0	544.7	108.9
cal 5 mdq	5	✓	1000.0	981.8	98.2
cal 6 mdq	6	✓	2500.0	2057.3	82.3
cal 7 mdq	7	✗	5000.0	3532.2	70.6
cal 8 mdq	8	✗	10000.0	6771.5	67.7

Compound Calibration Report

Batch results	D:\MassHunter\Data\2024\lam 27-28\070924\QuantResults\lam 28.batch.bin		
Last Cal. Update	7/10/2024 2:27 PM		
Analyst Name	ISP\datastor		
Analyte	Methamphetamine	Internal Standard	Methamphetamine-D11



Sample	Level	Enabled	Expected Concentration	Final Concentration	Accuracy
cal 1 mdq	1	✓	5.0	4.5	90.5
cal 2 mdq	2	✓	10.0	11.8	117.7
cal 3 mdq	3	✓	25.0	26.3	105.1
cal 4 mdq	4	✓	50.0	49.9	99.8
cal 5 mdq	5	✓	100.0	96.8	96.8
cal 6 mdq	6	✓	250.0	225.3	90.1
cal 7 mdq	7	✗	500.0	331.4	66.3
cal 8 mdq	8	✗	1000.0	561.6	56.2

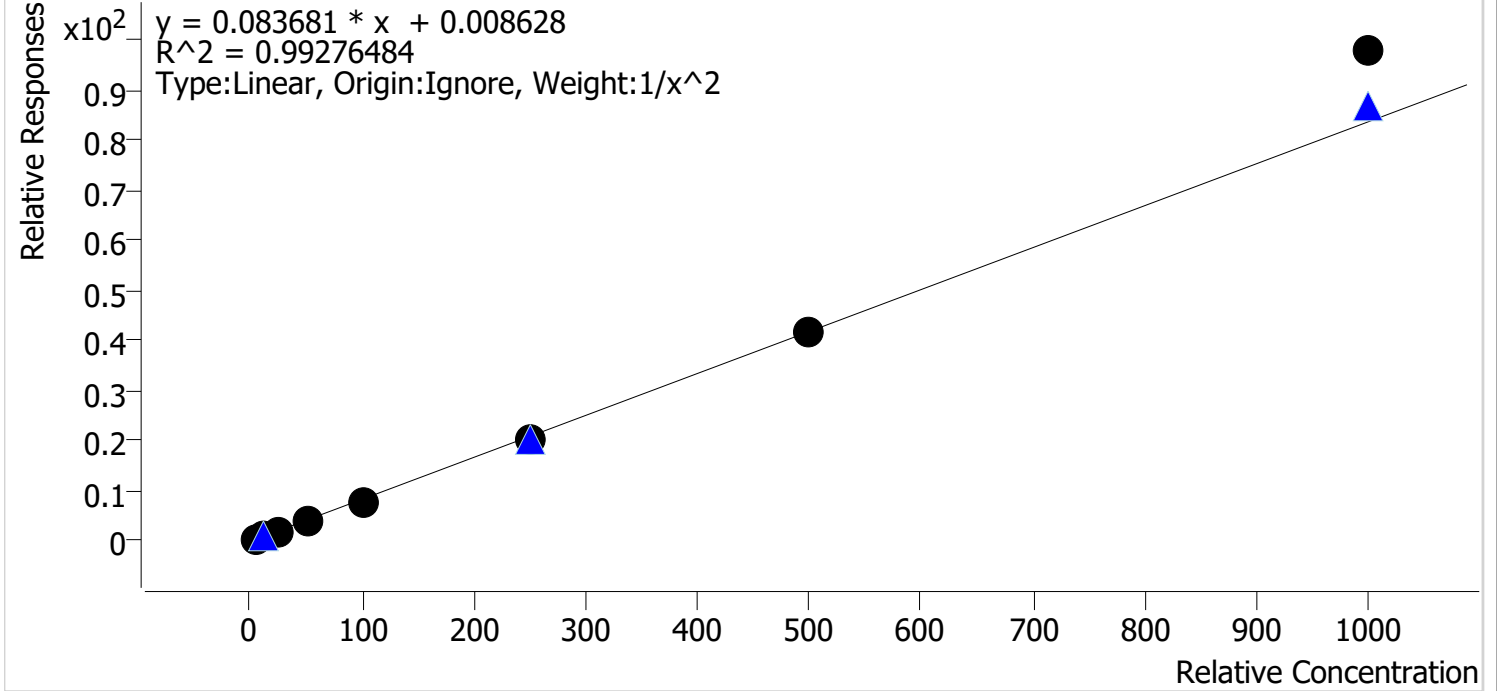
Compound Calibration Report

Batch results D:\MassHunter\Data\2024\am 27-28\070924\QuantResults\am 28.batch.bin
Last Cal. Update 7/10/2024 2:27 PM
Analyst Name ISP\datastor
Analyte Mirtazapine

Internal Standard

O-Desmethylvenlafaxine-d6

Mirtazapine - 8 Levels, 8 Levels Used, 8 Points, 8 Points Used, 3 QCs

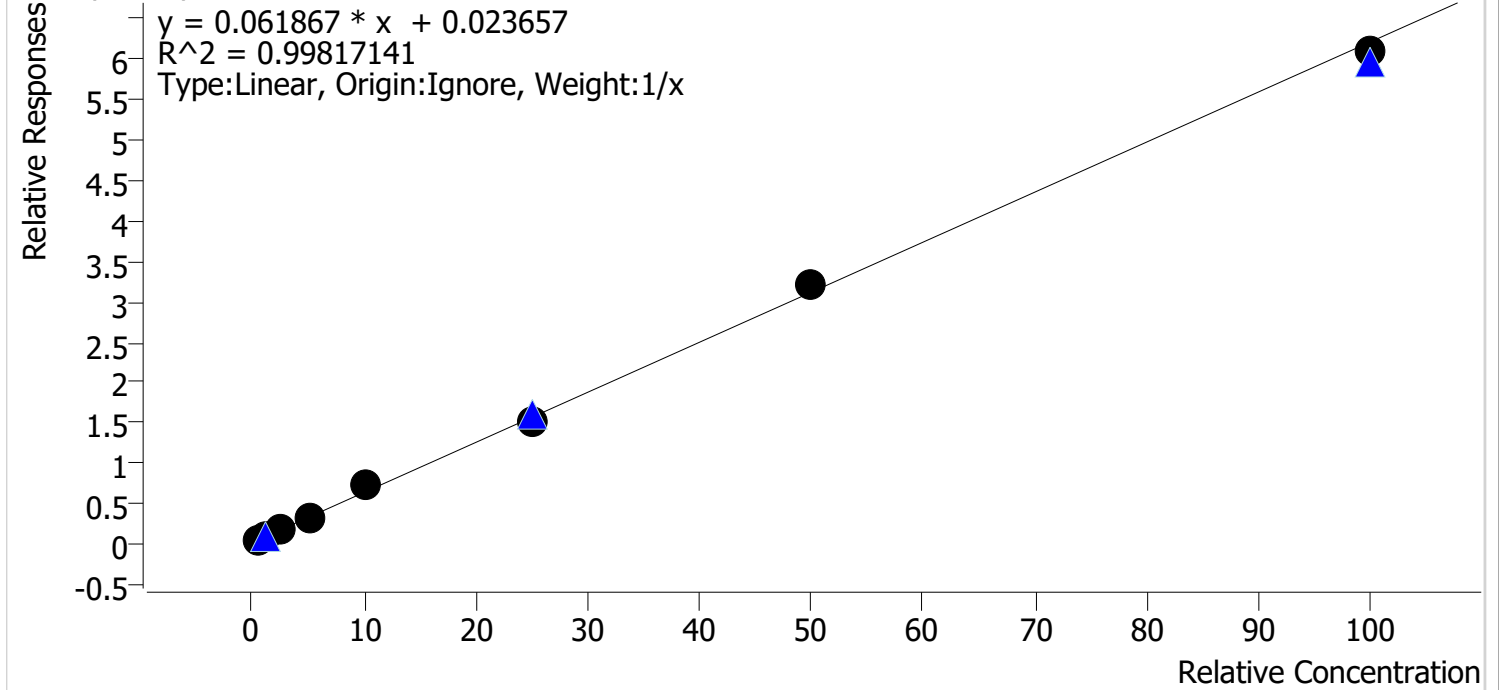


Sample	Level	Enabled	Expected Concentration	Final Concentration	Accuracy
cal 1 mdq	1	✓	5.0	5.1	102.5
cal 2 mdq	2	✓	10.0	9.7	97.5
cal 3 mdq	3	✓	25.0	24.4	97.6
cal 4 mdq	4	✓	50.0	48.0	96.1
cal 5 mdq	5	✓	100.0	93.3	93.3
cal 6 mdq	6	✓	250.0	238.9	95.5
cal 7 mdq	7	✓	500.0	503.0	100.6
cal 8 mdq	8	✓	1000.0	1169.1	116.9

Compound Calibration Report

Batch results	D:\MassHunter\Data\2024\am 27-28\070924\QuantResults\am 28.batch.bin		
Last Cal. Update	7/10/2024 2:27 PM		
Analyst Name	ISP\datastor		
Analyte	Norbuprenorphine	Internal Standard	Norbuprenorphine-D3

Norbuprenorphine - 8 Levels, 8 Levels Used, 8 Points, 8 Points Used, 3 QCs

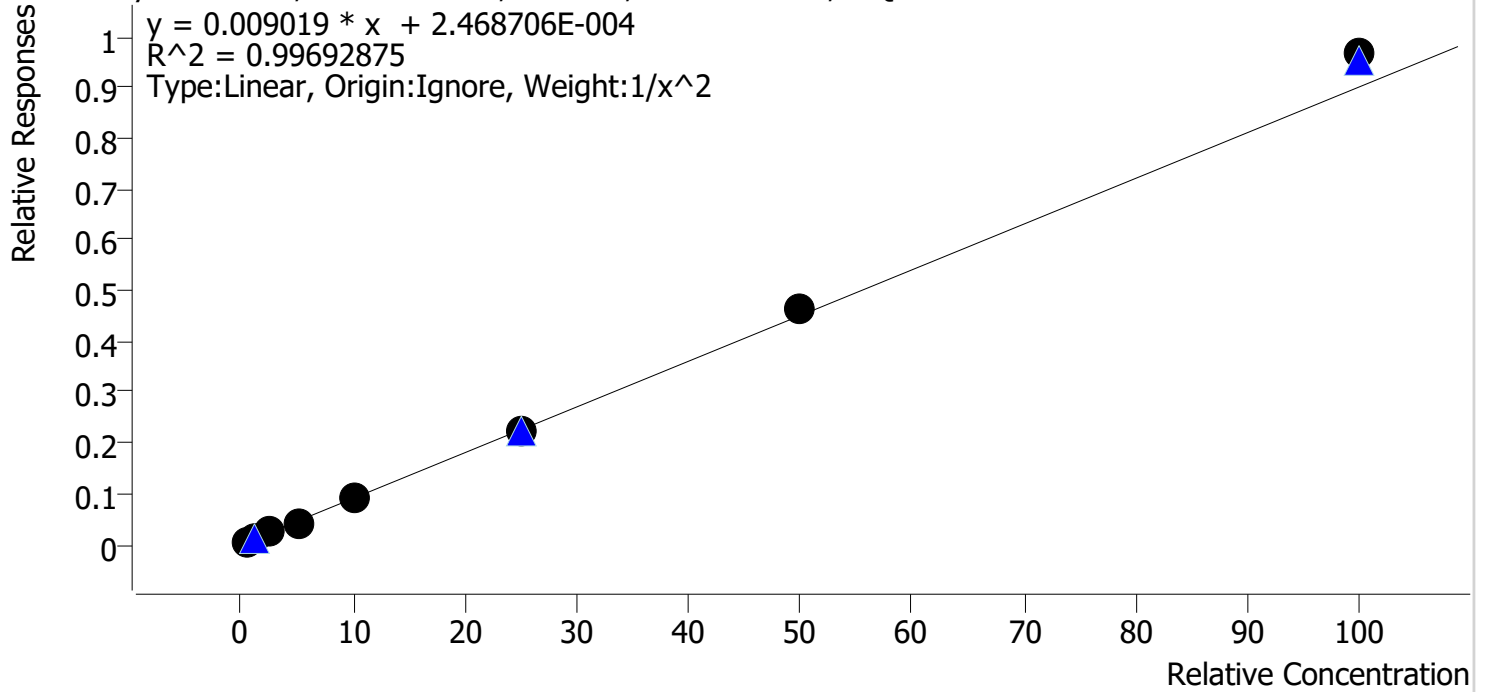


Sample	Level	Enabled	Expected Concentration	Final Concentration	Accuracy
cal 1 mdq	1	✓	0.5	0.5	107.4
cal 2 mdq	2	✓	1.0	0.8	84.8
cal 3 mdq	3	✓	2.5	2.4	95.1
cal 4 mdq	4	✓	5.0	5.0	99.9
cal 5 mdq	5	✓	10.0	11.4	114.4
cal 6 mdq	6	✓	25.0	24.4	97.7
cal 7 mdq	7	✓	50.0	51.3	102.6
cal 8 mdq	8	✓	100.0	98.1	98.1

Compound Calibration Report

Batch results D:\MassHunter\Data\2024\am 27-28\070924\QuantResults\am 28.batch.bin
Last Cal. Update 7/10/2024 2:27 PM
Analyst Name ISP\datastor
Analyte Norfentanyl **Internal Standard** Norfentanyl-D5

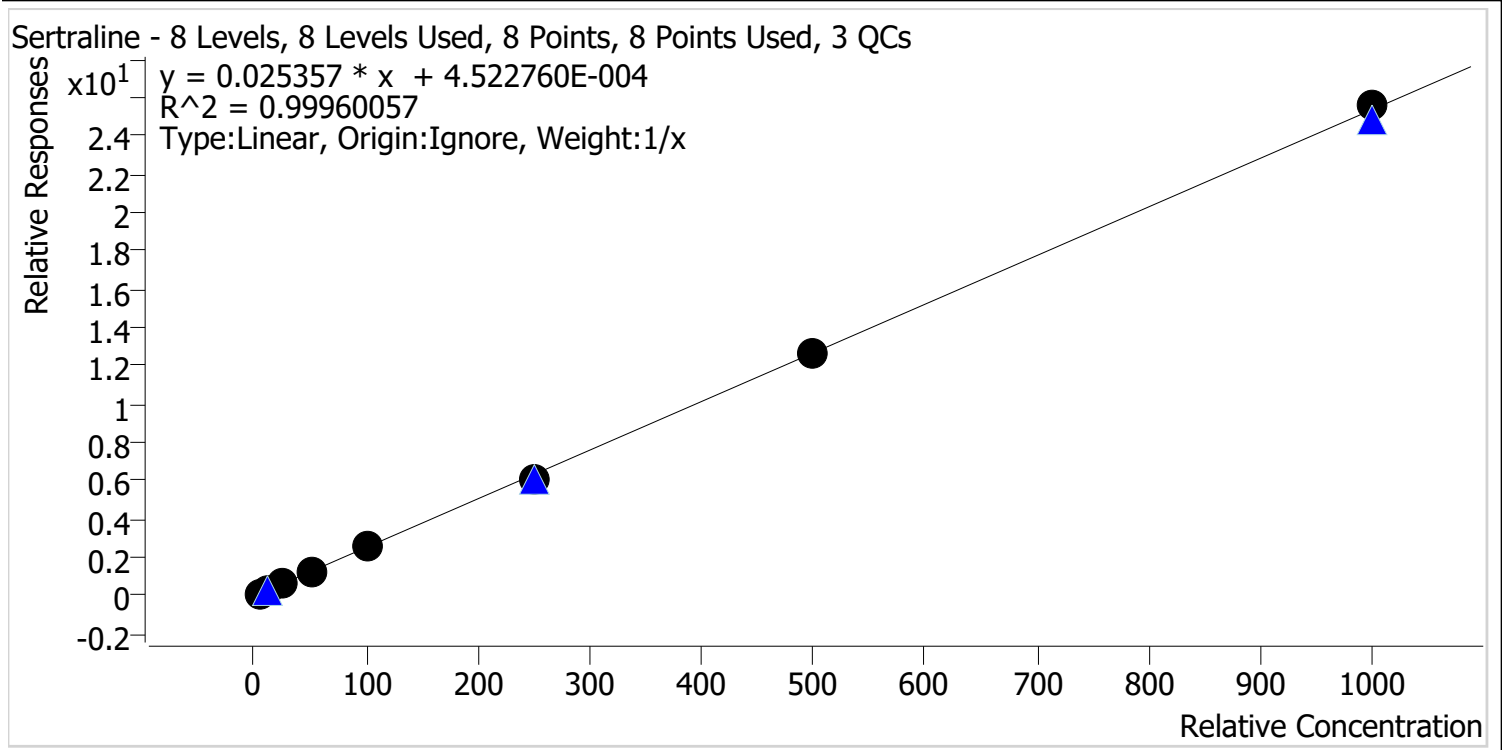
Norfentanyl - 8 Levels, 8 Levels Used, 8 Points, 8 Points Used, 3 QCs



Sample	Level	Enabled	Expected Concentration	Final Concentration	Accuracy
cal 1 mdq	1	✓	0.5	0.5	103.7
cal 2 mdq	2	✓	1.0	0.9	93.4
cal 3 mdq	3	✓	2.5	2.5	100.9
cal 4 mdq	4	✓	5.0	4.7	94.3
cal 5 mdq	5	✓	10.0	9.8	98.3
cal 6 mdq	6	✓	25.0	24.6	98.3
cal 7 mdq	7	✓	50.0	51.8	103.7
cal 8 mdq	8	✓	100.0	107.3	107.3

Compound Calibration Report

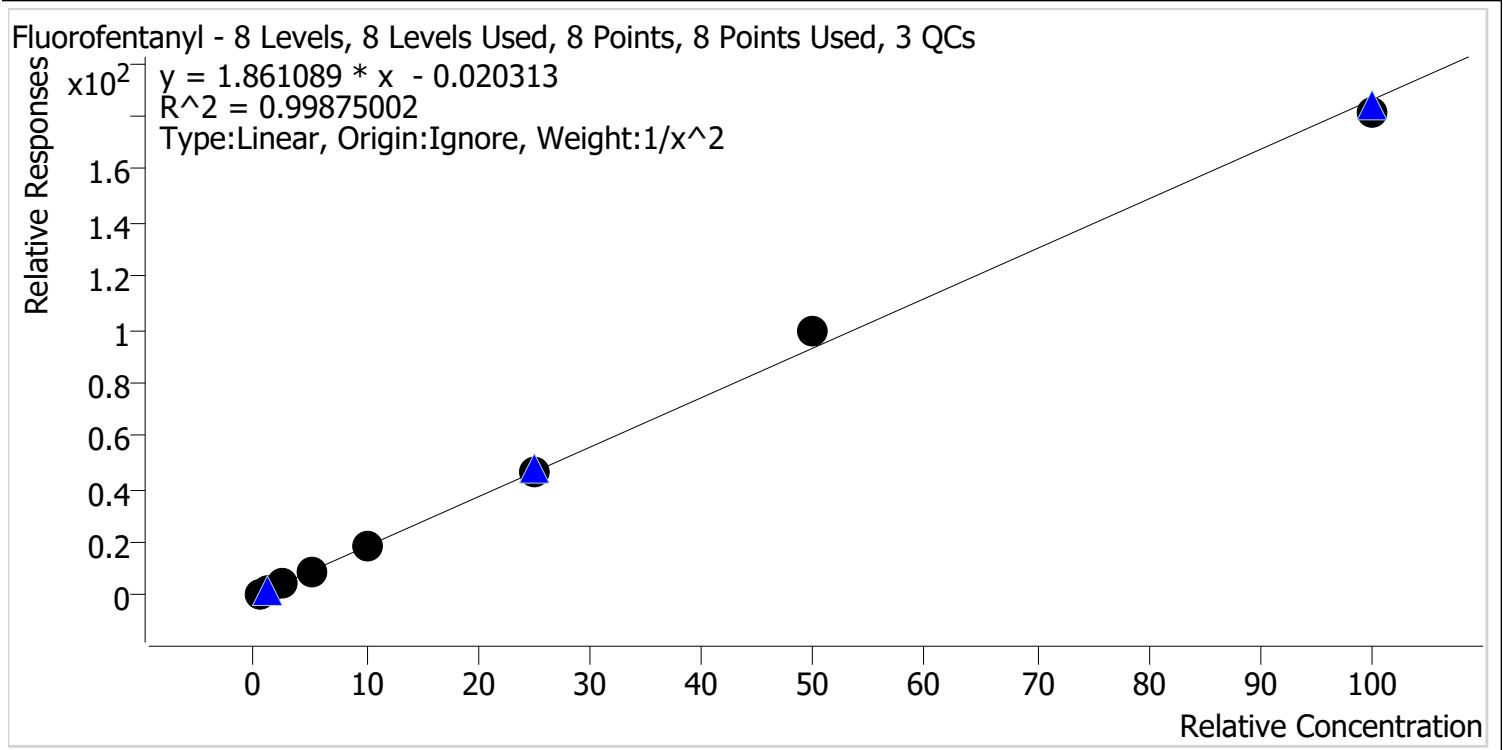
Batch results D:\MassHunter\Data\2024\lam 27-28\070924\QuantResults\lam 28.batch.bin
Last Cal. Update 7/10/2024 2:27 PM
Analyst Name ISP\datastor
Analyte Sertraline **Internal Standard** Sertraline-D3



Sample	Level	Enabled	Expected Concentration	Final Concentration	Accuracy
cal 1 mdq	1	✓	5.0	4.9	97.2
cal 2 mdq	2	✓	10.0	10.4	104.3
cal 3 mdq	3	✓	25.0	25.1	100.2
cal 4 mdq	4	✓	50.0	48.5	96.9
cal 5 mdq	5	✓	100.0	104.7	104.7
cal 6 mdq	6	✓	250.0	240.9	96.4
cal 7 mdq	7	✓	500.0	497.2	99.4
cal 8 mdq	8	✓	1000.0	1008.3	100.8

Compound Calibration Report

Batch results D:\MassHunter\Data\2024\lam 27-28\070924\QuantResults\lam 28.batch.bin
Last Cal. Update 7/10/2024 2:27 PM
Analyst Name ISP\datastor
Analyte Fluorofentanyl **Internal Standard** Fluorofentanyl-D5



Sample	Level	Enabled	Expected Concentration	Final Concentration	Accuracy
cal 1 mdq	1	✓	0.5	0.5	101.2
cal 2 mdq	2	✓	1.0	1.0	98.8
cal 3 mdq	3	✓	2.5	2.4	98.0
cal 4 mdq	4	✓	5.0	4.8	96.9
cal 5 mdq	5	✓	10.0	10.1	100.7
cal 6 mdq	6	✓	25.0	25.1	100.6
cal 7 mdq	7	✓	50.0	53.2	106.5
cal 8 mdq	8	✓	100.0	97.4	97.4

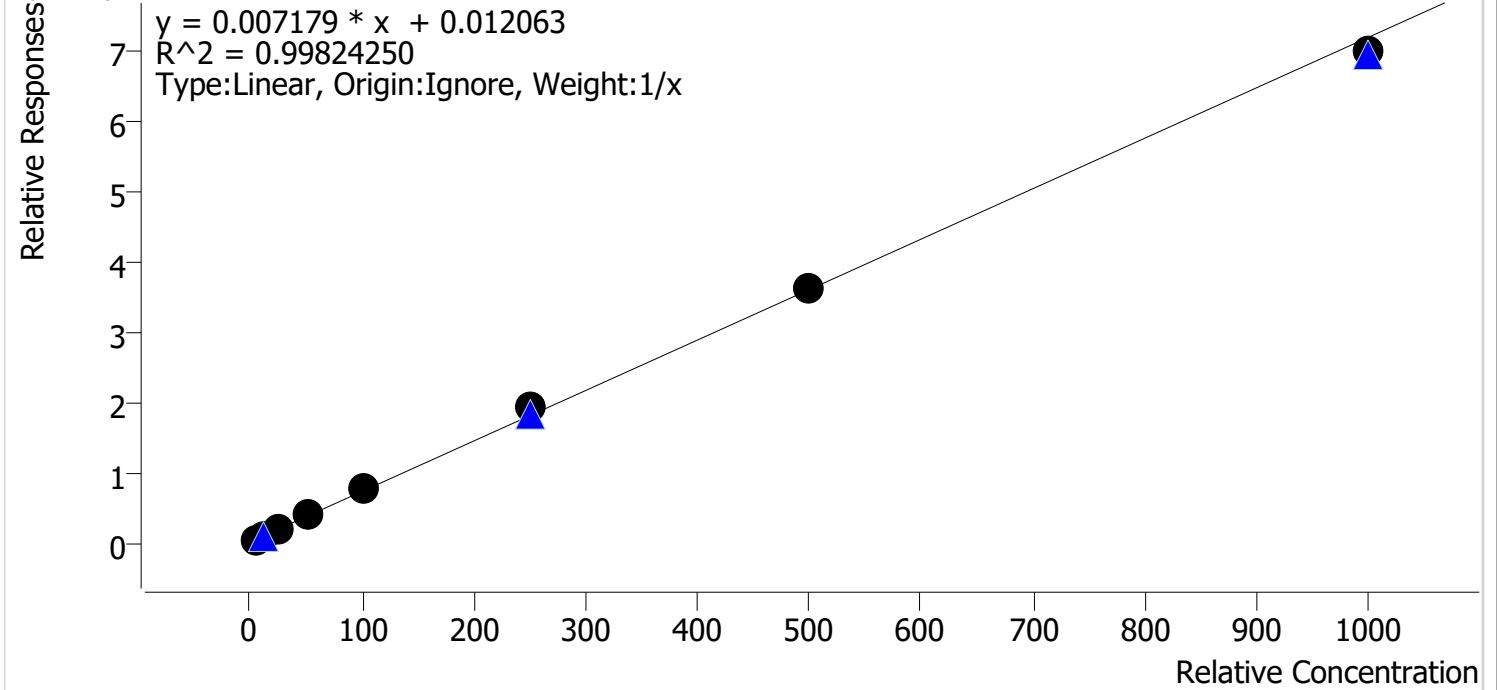
Compound Calibration Report

Batch results D:\MassHunter\Data\2024\lam 27-28\070924\QuantResults\lam 28.batch.bin
Last Cal. Update 7/10/2024 2:27 PM
Analyst Name ISP\datastor
Analyte Hydroxyzine

Internal Standard

Diphenhydramine-D3

Hydroxyzine - 8 Levels, 8 Levels Used, 8 Points, 8 Points Used, 3 QCs



Sample	Level	Enabled	Expected Concentration	Final Concentration	Accuracy
cal 1 mdq	1	✓	5.0	4.1	81.7
cal 2 mdq	2	✓	10.0	9.7	96.7
cal 3 mdq	3	✓	25.0	25.8	103.1
cal 4 mdq	4	✓	50.0	53.1	106.1
cal 5 mdq	5	✓	100.0	108.2	108.2
cal 6 mdq	6	✓	250.0	267.8	107.1
cal 7 mdq	7	✓	500.0	499.6	99.9
cal 8 mdq	8	✓	1000.0	971.9	97.2

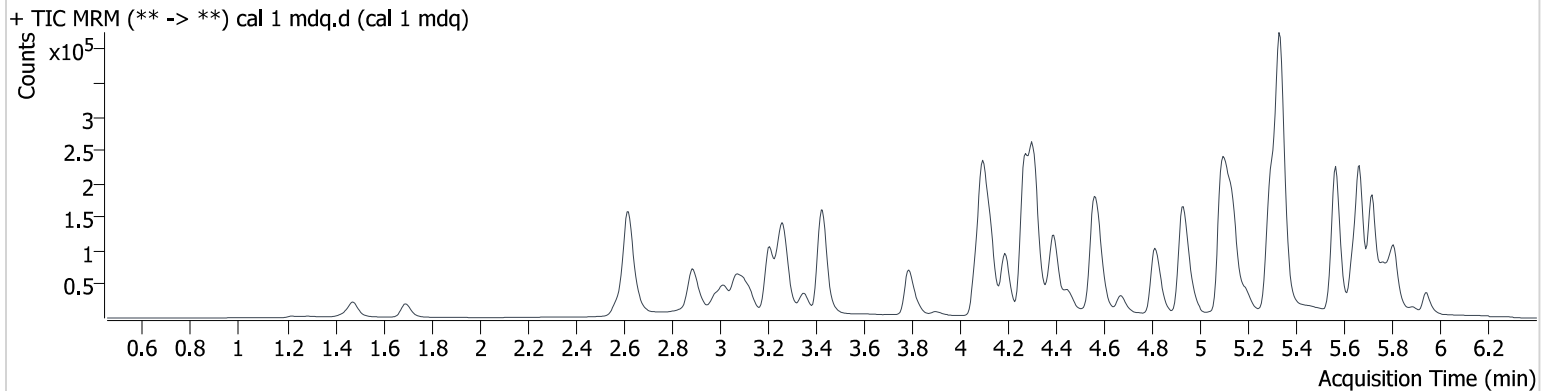
AM #28 Multi-Drug Quant. Results

Batch results D:\MassHunter\Data\2024\am 27-28\070924\QuantResults\am 28.batch.bin
Calibration Last Update 7/10/2024 2:27:24 PM

Instrument 69679
Type Cal
Acq. Method mdqp1 121523.m
Sample Position P2-A1
Injection Volume 2
Acq. Date-Time 7/9/2024 1:32:56 PM
Sample Info.

Data File cal 1 mdq.d
Sample cal 1 mdq
Operator Anne Nord
Comment Only drugs and concentrations listed on the laboratory report itself are appropriate to be used for interpretation purposes. Any drugs or values in the notes but not included on the report are used by laboratory personnel to make determinations/reach conclusions within the confines of the methods.

Sample Chromatogram



Name	RT	Resp.	S/N	Ratio	S/N	ISTD Resp.	Final Conc.
a-hydroxyalprazolam	5.695	877	1191.3	62.80	122.0	10686	5.302 ng/ml
Amphetamine	3.104	22910	665.7	267.59	3578.9	116015	4.763 ng/ml
Benzoylcegonine	3.926	1088	57.3	47.53	60.3	6358	5.995 ng/ml
Buprenorphine	5.777	1042	576.7	11.93 Low	115.7	27165	0.666 ng/ml
Cocaine	4.308	29330	2466.8	45.70	22079.3	425697	4.950 ng/ml
EDDP	5.305	26509	509.3	45.71	392.3	190226	4.958 ng/ml
Fentanyl	5.127	3471	641.6	122.16	547.8	274231	0.511 ng/ml
Fluorofentanyl	5.183	3147	3733.6	114.32	7.1 Low	3415	0.506 ng/ml
Fluoxetine	5.722	31828	417152.2	7.16	64129.2	199644	4.893 ng/ml
Hydroxyzine	5.715	31659	615.7	102.14	116.4	765023	4.084 ng/ml
Lamotrigine	4.377	19748	∞	100.02	∞	73022	48.215 ng/ml
Methadone	5.670	38511	1063.7	71.87	3786.1	343467	5.121 ng/ml
Methamphetamine	3.273	71091	1432.0	36.82	314.6	252716	4.525 ng/ml
Mirtazapine	4.674	46187	2273.9	49.40	9241.5	105610	5.123 ng/ml
Norbuprenorphine	5.058	473	2461.0	123.04	1653.8	8312	0.537 ng/ml
Norfentanyl	4.123	1947	73.1	30.67	81.2	395450	0.519 ng/ml
Sertraline	5.790	8877	1656.2	99.86	1263.4	71767	4.860 ng/ml

AM #28 Multi-Drug Quant. Results

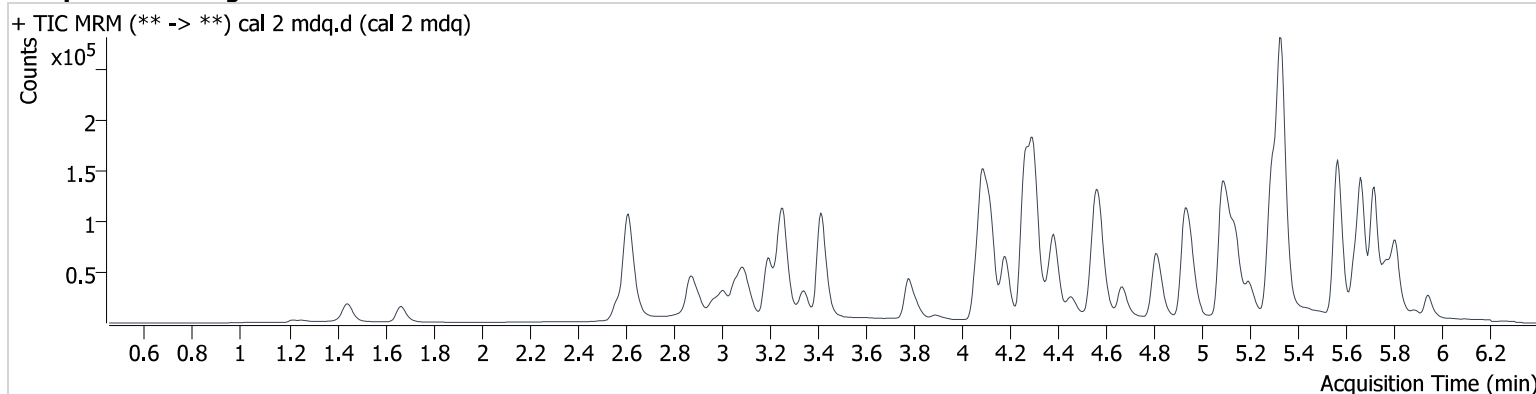
Batch results D:\MassHunter\Data\2024\am 27-28\070924\QuantResults\am 28.batch.bin
Calibration Last Update 7/10/2024 2:27:24 PM

Instrument 69679
Type Cal
Acq. Method mdqp1 121523.m
Sample Position P2-B1
Injection Volume 2
Acq. Date-Time 7/9/2024 1:43:52 PM
Sample Info.

Data File cal 2 mdq.d
Sample cal 2 mdq
Operator Anne Nord
Comment

Only drugs and concentrations listed on the laboratory report itself are appropriate to be used for interpretation purposes. Any drugs or values in the notes but not included on the report are used by laboratory personnel to make determinations/reach conclusions within the confines of the methods.

Sample Chromatogram



Name	RT	Resp.	S/N	Ratio	S/N	ISTD Resp.	Final Conc.
a-hydroxyalprazolam	5.700	1293	89.8	69.51	231.0	6292	10.946 ng/ml
Amphetamine	3.094	24638	401.2	273.46	1228.0	63347	10.560 ng/ml
Benzoylcegonine	3.915	1127	100.4	51.39	98.1	4269	9.078 ng/ml
Buprenorphine	5.792	1168	194.7	17.34	232.2	17855	1.033 ng/ml
Cocaine	4.303	35818	2048.0	44.52	2118.9	252879	10.250 ng/ml
EDDP	5.300	35487	∞	42.20	2838.7	133812	10.292 ng/ml
Fentanyl	5.127	3836	1061.9	124.85	977.6	158838	0.981 ng/ml
Fluorofentanyl	5.188	3398	1575.5	117.12	104.8	1869	0.988 ng/ml
Fluoxetine	5.717	33994	∞	6.86	7403.4	102300	10.472 ng/ml
Hydroxyzine	5.715	37375	∞	105.83	789.6	458651	9.671 ng/ml
Lamotrigine	4.367	23777	30347.0	99.89	∞	50632	100.966 ng/ml
Methadone	5.664	39553	1487.6	76.41	2182.4	179411	9.690 ng/ml
Methamphetamine	3.258	76801	4530.6	36.40	1500.6	141151	11.771 ng/ml
Mirtazapine	4.669	53125	7845.6	51.49	5736.0	64451	9.747 ng/ml
Norbuprenorphine	5.043	372	631.2	124.97	267.3	4890	0.848 ng/ml
Norfentanyl	4.113	2064	129.2	29.23	734.1	237896	0.934 ng/ml
Sertraline	5.790	9314	1802.0	86.31	1583.8	35163	10.428 ng/ml

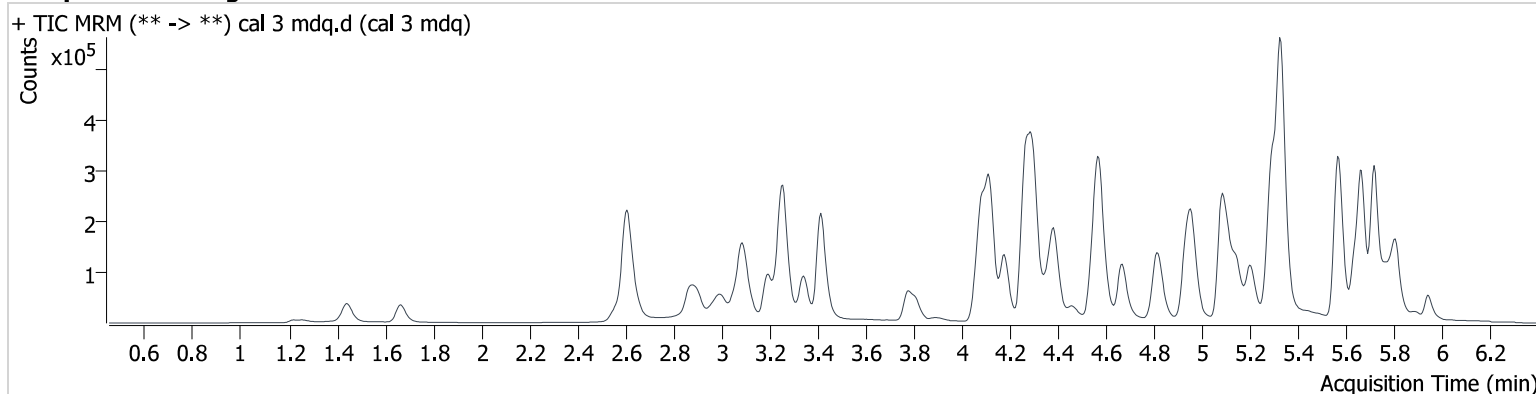
AM #28 Multi-Drug Quant. Results

Batch results D:\MassHunter\Data\2024\am 27-28\070924\QuantResults\am 28.batch.bin
Calibration Last Update 7/10/2024 2:27:24 PM

Instrument 69679
Type Cal
Acq. Method mdqp1 121523.m
Sample Position P2-C1
Injection Volume 2
Acq. Date-Time 7/9/2024 1:52:34 PM
Sample Info.

Data File cal 3 mdq.d
Sample cal 3 mdq
Operator Anne Nord
Comment Only drugs and concentrations listed on the laboratory report itself are appropriate to be used for interpretation purposes. Any drugs or values in the notes but not included on the report are used by laboratory personnel to make determinations/reach conclusions within the confines of the methods.

Sample Chromatogram



Name	RT	Resp.	S/N	Ratio	S/N	ISTD Resp.	Final Conc.
a-hydroxyalprazolam	5.695	4965	163.6	63.42	2173.6	8702	27.632 ng/ml
Amphetamine	3.089	87661	5114.4	267.27	11314.0	94149	26.977 ng/ml
Benzoylcegonine	3.910	4480	1421.7	40.33	243.5	6508	23.161 ng/ml
Buprenorphine	5.808	3621	3696.8	14.59	2682.4	23075	2.277 ng/ml
Cocaine	4.298	125895	5511.4	44.10	86034.2	367169	24.914 ng/ml
EDDP	5.294	127489	∞	43.17	2777.3	213163	24.402 ng/ml
Fentanyl	5.127	13989	2949.4	125.83	1169.5	236151	2.418 ng/ml
Fluorofentanyl	5.183	11968	3847.7	121.62	385.0	2637	2.450 ng/ml
Fluoxetine	5.722	116528	177970.7	6.47	10282.1	150753	24.693 ng/ml
Hydroxyzine	5.720	126684	54448.4	111.63	8382.4	642770	25.775 ng/ml
Lamotrigine	4.362	71242	∞	100.13	216566.0	61587	282.975 ng/ml
Methadone	5.665	159893	14534.1	66.52	8313.4	281518	24.345 ng/ml
Methamphetamine	3.258	230682	35252.3	36.42	2289.8	215570	26.275 ng/ml
Mirtazapine	4.669	189569	21810.2	51.10	14495.8	92416	24.410 ng/ml
Norbuprenorphine	5.043	1179	2975.2	102.80	1473.5	6906	2.377 ng/ml
Norfentanyl	4.113	7958	616.0	27.69	454.5	345867	2.524 ng/ml
Sertraline	5.790	30629	14799.1	95.28	13578.4	48179	25.054 ng/ml

AM #28 Multi-Drug Quant. Results

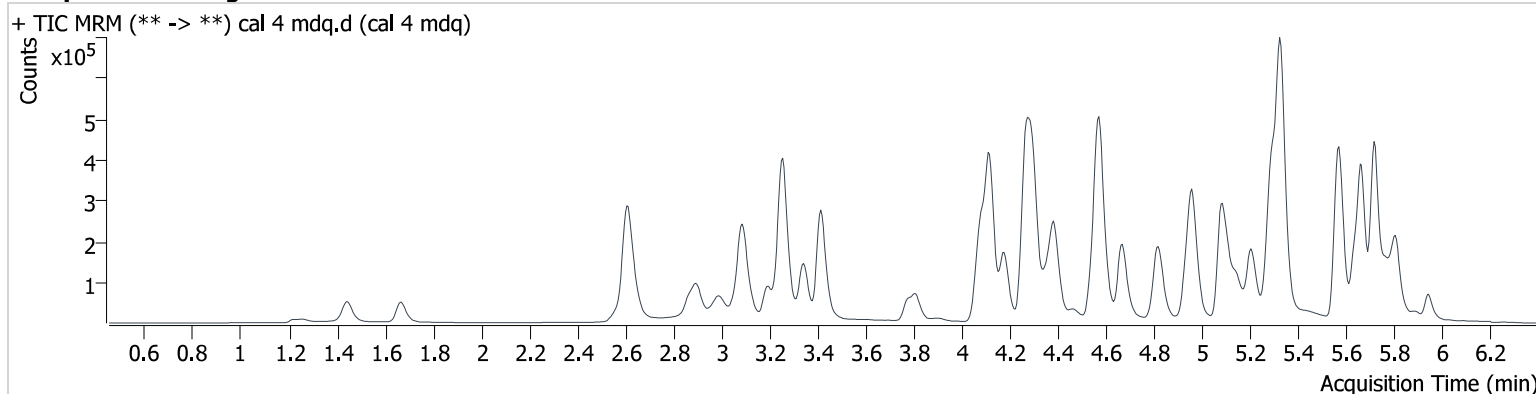
Batch results D:\MassHunter\Data\2024\am 27-28\070924\QuantResults\am 28.batch.bin
Calibration Last Update 7/10/2024 2:27:24 PM

Instrument 69679
Type Cal
Acq. Method mdqp1 121523.m
Sample Position P2-D1
Injection Volume 2
Acq. Date-Time 7/9/2024 2:01:13 PM
Sample Info.

Data File cal 4 mdq.d
Sample cal 4 mdq
Operator Anne Nord
Comment

Only drugs and concentrations listed on the laboratory report itself are appropriate to be used for interpretation purposes. Any drugs or values in the notes but not included on the report are used by laboratory personnel to make determinations/reach conclusions within the confines of the methods.

Sample Chromatogram



Name	RT	Resp.	S/N	Ratio	S/N	ISTD Resp.	Final Conc.
a-hydroxyalprazolam	5.695	7244	411.7	70.54	952.0	7301	46.905 ng/ml
Amphetamine	3.089	148755	75190.3	260.53	11164.2	82533	53.359 ng/ml
Benzoylcegonine	3.910	8121	1908.2	42.43	544.2	5603	48.413 ng/ml
Buprenorphine	5.813	7369	∞	15.83	19271.4	19711	5.227 ng/ml
Cocaine	4.298	217705	39855.0	44.13	8937.3	320285	49.460 ng/ml
EDDP	5.294	212642	7047.7	42.63	2450.4	182668	48.394 ng/ml
Fentanyl	5.127	24407	2293.8	131.17	2992.1	207359	4.811 ng/ml
Fluorofentanyl	5.183	22811	2347.0	117.64	693.2	2535	4.847 ng/ml
Fluoxetine	5.717	210993	73195.5	6.69	∞	136407	49.666 ng/ml
Hydroxyzine	5.720	227365	18259.5	106.90	14863.9	578626	53.057 ng/ml
Lamotrigine	4.362	112985	∞	99.56	23436.5	52673	544.725 ng/ml
Methadone	5.664	278828	24262.3	68.49	7992.6	244935	48.402 ng/ml
Methamphetamine	3.258	368607	∞	37.06	6730.6	191335	49.888 ng/ml
Mirtazapine	4.669	329016	18230.4	51.50	70149.4	81675	48.036 ng/ml
Norbuprenorphine	5.043	1975	2355.1	105.62	7095.3	5940	4.993 ng/ml
Norfentanyl	4.113	13045	432.6	29.52	1028.4	304950	4.715 ng/ml
Sertraline	5.790	51510	8093.5	93.48	20705.4	41905	48.460 ng/ml

AM #28 Multi-Drug Quant. Results

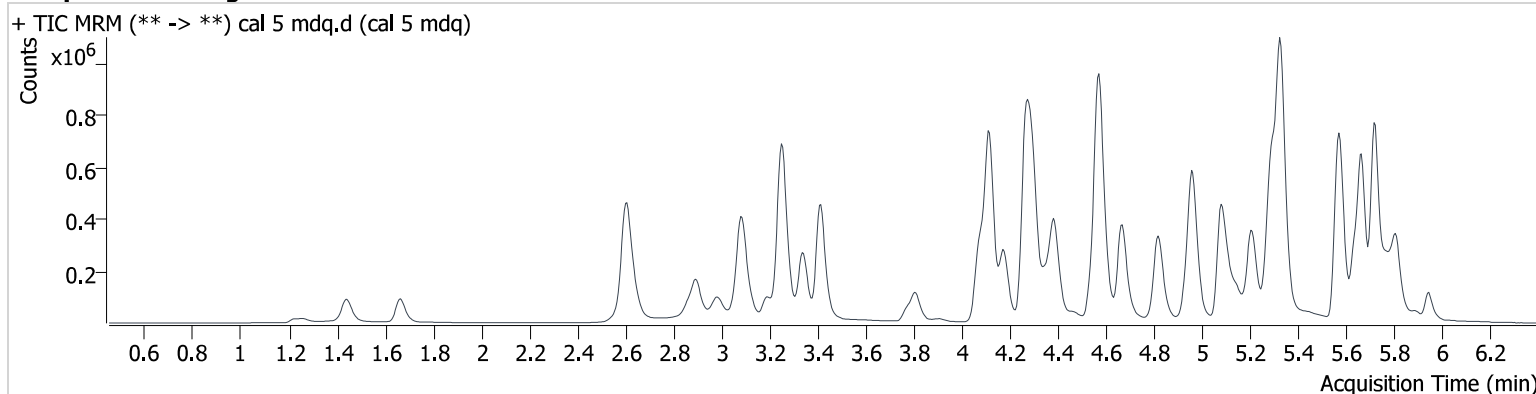
Batch results D:\MassHunter\Data\2024\am 27-28\070924\QuantResults\am 28.batch.bin
Calibration Last Update 7/10/2024 2:27:24 PM

Instrument 69679
Type Cal
Acq. Method mdqp1 121523.m
Sample Position P2-E1
Injection Volume 2
Acq. Date-Time 7/9/2024 2:09:53 PM
Sample Info.

Data File cal 5 mdq.d
Sample cal 5 mdq
Operator Anne Nord

Comment
Only drugs and concentrations listed on the laboratory report itself are appropriate to be used for interpretation purposes. Any drugs or values in the notes but not included on the report are used by laboratory personnel to make determinations/reach conclusions within the confines of the methods.

Sample Chromatogram



Name	RT	Resp.	S/N	Ratio	S/N	ISTD Resp.	Final Conc.
a-hydroxyalprazolam	5.695	15185	536.9	55.81	2327.9	8463	83.570 ng/ml
Amphetamine	3.089	266176	133910.0	263.82	585091.9	79725	99.878 ng/ml
Benzoylcegonine	3.910	15059	2078.6	45.00	855.9	5128	97.752 ng/ml
Buprenorphine	5.818	13786	∞	15.38	387.4	20273	9.389 ng/ml
Cocaine	4.298	436320	1274825.1	43.36	29573.1	322391	98.549 ng/ml
EDDP	5.294	440111	∞	41.67	39333.8	177919	103.904 ng/ml
Fentanyl	5.127	50007	11900.2	135.41	7376.5	214210	9.549 ng/ml
Fluorofentanyl	5.183	45729	68295.1	116.24	979.0	2443	10.069 ng/ml
Fluoxetine	5.722	411822	∞	6.77	1004448.2	129934	102.032 ng/ml
Hydroxyzine	5.720	443324	47008.2	108.61	146881.6	562233	108.160 ng/ml
Lamotrigine	4.362	186842	∞	96.97	109540.9	49232	981.770 ng/ml
Methadone	5.665	585610	27126.3	67.99	289715.5	253685	97.746 ng/ml
Methamphetamine	3.252	707010	119724.5	38.32	∞	194891	96.796 ng/ml
Mirtazapine	4.669	636287	14593.2	54.40	16411.0	81399	93.310 ng/ml
Norbuprenorphine	5.043	4326	7185.5	91.53	1060.1	5912	11.445 ng/ml
Norfentanyl	4.108	24760	896.2	29.12	1239.1	278511	9.829 ng/ml
Sertraline	5.790	106082	7293.3	92.78	1020633.3	39937	104.736 ng/ml

AM #28 Multi-Drug Quant. Results

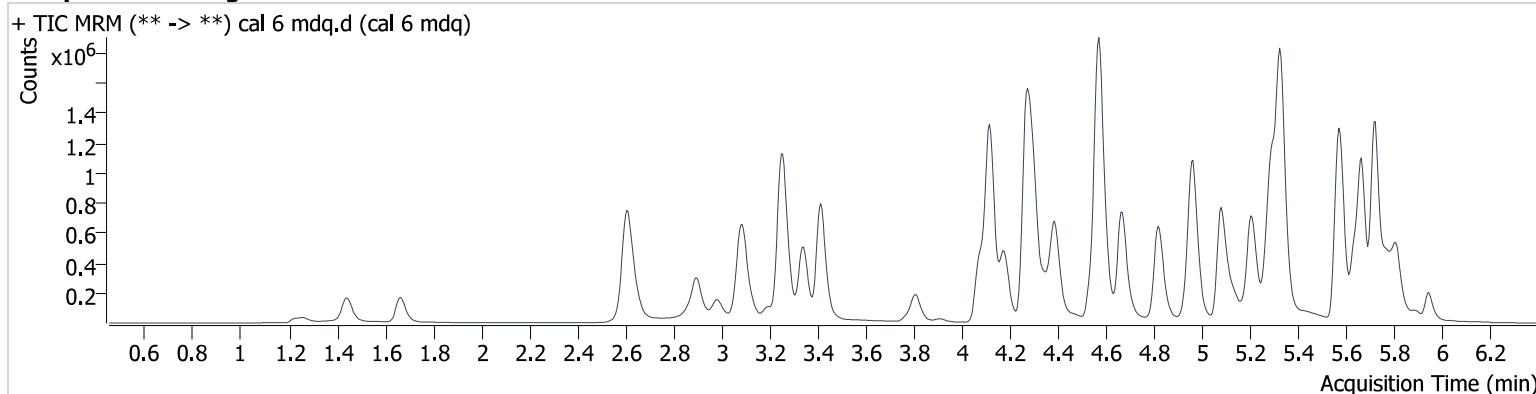
Batch results D:\MassHunter\Data\2024\am 27-28\070924\QuantResults\am 28.batch.bin
Calibration Last Update 7/10/2024 2:27:24 PM

Instrument 69679
Type Cal
Acq. Method mdqp1 121523.m
Sample Position P2-F1
Injection Volume 2
Acq. Date-Time 7/9/2024 2:18:33 PM
Sample Info.

Data File cal 6 mdq.d
Sample cal 6 mdq
Operator Anne Nord
Comment

Only drugs and concentrations listed on the laboratory report itself are appropriate to be used for interpretation purposes. Any drugs or values in the notes but not included on the report are used by laboratory personnel to make determinations/reach conclusions within the confines of the methods.

Sample Chromatogram



Name	RT	Resp.	S/N	Ratio	S/N	ISTD Resp.	Final Conc.
a-hydroxalprazolam	5.695	30032	286.1	58.56	8662.4	5686	243.008 ng/ml
Amphetamine	3.089	446183	20461.2	259.61	57541.0	63487	211.587 ng/ml
Benzoylcegonine	3.910	33631	4654.0	41.03	1211.1	4523	247.067 ng/ml
Buprenorphine	5.818	29222	∞	15.79	1607193280 4809.0	16450	24.295 ng/ml
Cocaine	4.298	876987	306748.4	43.09	119241.2	255393	250.154 ng/ml
EDDP	5.294	840780	17528.7	40.87	47252.1	143843	246.814 ng/ml
Fentanyl	5.127	105047	14151.3	133.56	13823.2	176192	24.400 ng/ml
Fluorofentanyl	5.183	95708	144604.5	112.70	1853.7	2046	25.144 ng/ml
Fluoxetine	5.722	751116	1705594.6	6.64	75021.2	96035	252.155 ng/ml
Hydroxyzine	5.720	869142	∞	105.41	∞	449258	267.814 ng/ml
Lamotrigine	4.362	281566	29220.9	93.46	158758.4	35842	2057.310 ng/ml
Methadone	5.665	1174521	116308.9	66.58	∞	194758	254.729 ng/ml
Methamphetamine	3.252	1306093	∞	38.92	68772.8	157598	225.280 ng/ml
Mirtazapine	4.669	1304721	37469.5	50.52	12697.2	65249	238.853 ng/ml
Norbuprenorphine	5.043	8413	14247.6	102.47	114659.9	5482	24.423 ng/ml
Norfentanyl	4.113	44583	1667.3	29.22	11900.1	200833	24.585 ng/ml
Sertraline	5.790	178605	160894.1	93.99	339338.5	29233	240.931 ng/ml

AM #28 Multi-Drug Quant. Results

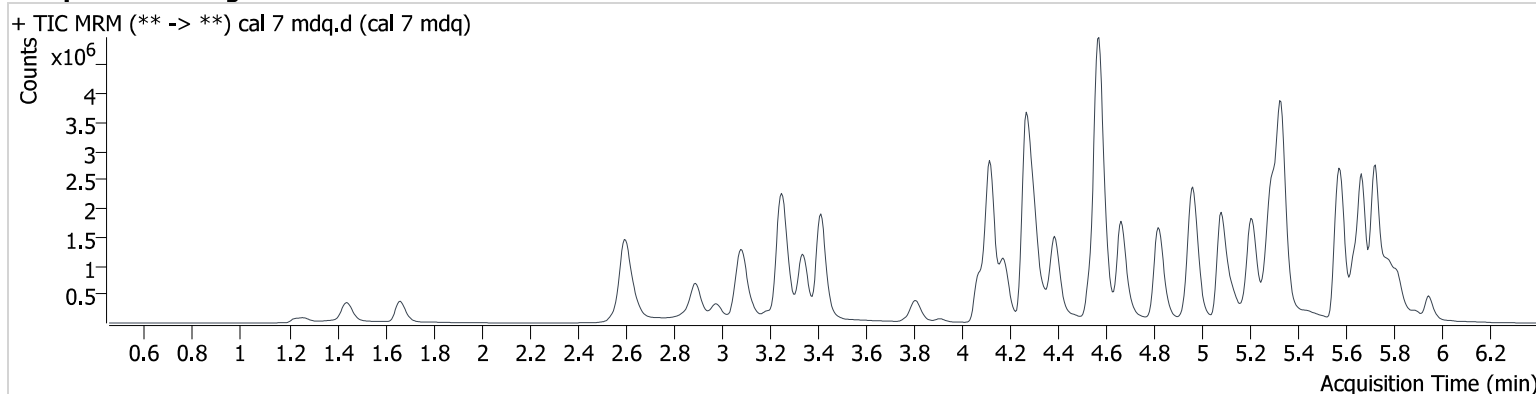
Batch results D:\MassHunter\Data\2024\am 27-28\070924\QuantResults\am 28.batch.bin
Calibration Last Update 7/10/2024 2:27:24 PM

Instrument 69679
Type Cal
Acq. Method mdqp1 121523.m
Sample Position P2-G1
Injection Volume 2
Acq. Date-Time 7/9/2024 2:27:14 PM
Sample Info.

Data File cal 7 mdq.d
Sample cal 7 mdq
Operator Anne Nord
Comment

Only drugs and concentrations listed on the laboratory report itself are appropriate to be used for interpretation purposes. Any drugs or values in the notes but not included on the report are used by laboratory personnel to make determinations/reach conclusions within the confines of the methods.

Sample Chromatogram



Name	RT	Resp.	S/N	Ratio	S/N	ISTD Resp.	Final Conc.
a-hydroxyalprazolam	5.695	71387	839.4	56.69	363.9	6947	471.308 ng/ml
Amphetamine	3.089	913798	152104.1	257.01	179441.7	88809	310.345 ng/ml
Benzoylcegonine	3.910	98500	32210.5	42.73	6504.3	6240	524.068 ng/ml
Buprenorphine	5.823	63854	12414.9	15.22	12428.6	18340	47.481 ng/ml
Cocaine	4.298	2127849	231609.2	42.98	108962.9	311489	497.715 ng/ml
EDDP	5.294	2353111	160771.8	41.50	∞	197396	504.348 ng/ml
Fentanyl	5.127	322304	4814.7	135.32	51485.3	249421	52.892 ng/ml
Fluorofentanyl	5.183	285108	3159.4	109.55	2076.3	2879	53.230 ng/ml
Fluoxetine	5.722	1672021	∞	6.60	196504.2	108104	498.891 ng/ml
Hydroxyzine	5.720	1884713	205692.3	111.03	135027.3	523769	499.578 ng/ml
Lamotrigine	4.357	414194	∞	94.48	258220.3	30854	3532.221 ng/ml
Methadone	5.665	3344217	503521.8	60.26	162544.7	271906	519.095 ng/ml
Methamphetamine	3.252	3236812	993135.4	39.25	113896.2	266733	331.368 ng/ml
Mirtazapine	4.664	3141553	317570.5	51.67	229038.9	74624	502.979 ng/ml
Norbuprenorphine	5.043	23457	42558.5	98.77	30927.9	7337	51.296 ng/ml
Norfentanyl	4.113	80841	11502.2	28.35	5007.5	172823	51.835 ng/ml
Sertraline	5.785	375569	308736.0	95.18	76448.8	29787	497.228 ng/ml

AM #28 Multi-Drug Quant. Results

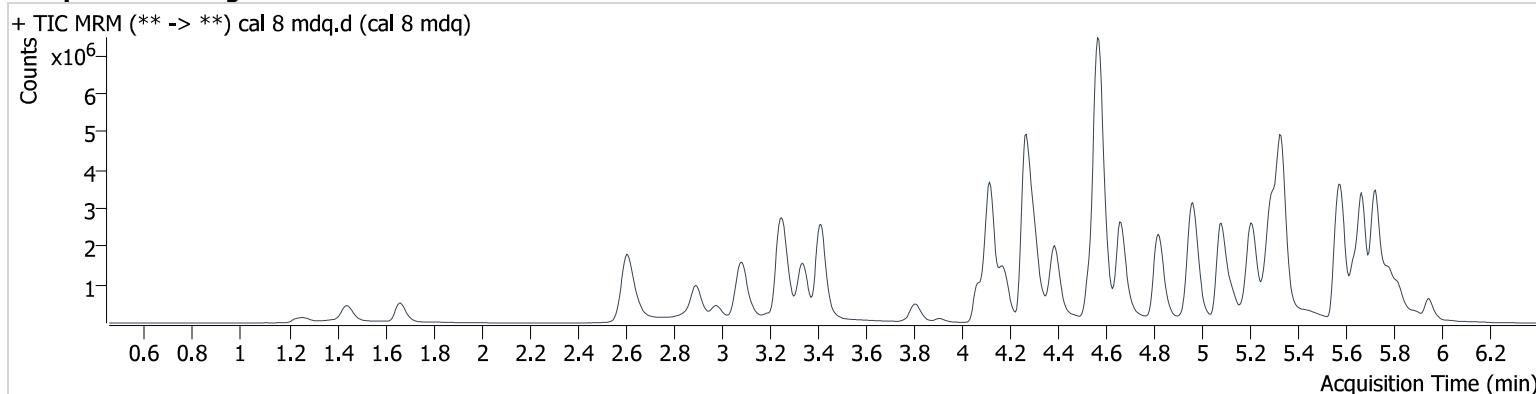
Batch results D:\MassHunter\Data\2024\am 27-28\070924\QuantResults\am 28.batch.bin
Calibration Last Update 7/10/2024 2:27:24 PM

Instrument 69679
Type Cal
Acq. Method mdqp1 121523.m
Sample Position P2-H1
Injection Volume 2
Acq. Date-Time 7/9/2024 2:44:35 PM
Sample Info.

Data File cal 8 mdq.d
Sample cal 8 mdq
Operator Anne Nord
Comment

Only drugs and concentrations listed on the laboratory report itself are appropriate to be used for interpretation purposes. Any drugs or values in the notes but not included on the report are used by laboratory personnel to make determinations/reach conclusions within the confines of the methods.

Sample Chromatogram



Name	RT	Resp.	S/N	Ratio	S/N	ISTD Resp.	Final Conc.
a-hydroxyalprazolam	5.695	83558	2545.5	57.81	1283.5	3639	1051.330 ng/ml
Amphetamine	3.094	1086309	81600.2	253.51	567360.2	65012	504.735 ng/ml
Benzoylcegonine	3.905	160090	19647.2	41.51	41875.4	5398	984.466 ng/ml
Buprenorphine	5.823	92109	345567.8	16.31	41017.2	10902	115.010 ng/ml
Cocaine	4.298	2952169	496359.2	43.11	269162.7	211359	1017.738 ng/ml
EDDP	5.294	3619230	95330.6	42.89	42006.6	153236	1000.203 ng/ml
Fentanyl	5.127	514893	97674.9	136.06	127591.1	195284	107.929 ng/ml
Fluorofentanyl	5.178	454588	413632.0	108.63	3855.7	2509	97.356 ng/ml
Fluoxetine	5.722	2207492	2914224.0	6.67	372775.7	73688	966.521 ng/ml
Hydroxyzine	5.720	2392195	163295.1	111.85	281414.7	342293	971.861 ng/ml
Lamotrigine	4.357	456351	∞	94.92	799937.1	17788	6771.490 ng/ml
Methadone	5.665	4456961	240600.9	62.67	100240.7	182483	1030.444 ng/ml
Methamphetamine	3.252	4320433	1480320.9	38.77	83386.5	210926	561.551 ng/ml
Mirtazapine	4.664	4835178	587397.4	50.42	294092.7	49420	1169.072 ng/ml
Norbuprenorphine	5.037	35323	65854.2	98.11	114136.8	5799	98.081 ng/ml
Norfentanyl	4.113	88800	5280.5	28.17	9989.0	91734	107.299 ng/ml
Sertraline	5.785	553356	79454.2	95.24	72921.4	21643	1008.303 ng/ml